

21
YEARS AND COUNTING...

UAE

Medica Trading LLC

Business Bay, Al Khaleej Al Thejari Street,
Vision Tower, 38th Floor
P.O.Box: 31135, Dubai - U.A.E.
Tel: + 971 4 43 70 669
Fax: + 971 4 43 70 668
info@medicagroup.com

KSA

Medica KSA

Northern Ring Road, Al Falah District, Exit 8,
Al Sahbani Building, 1st Floor, Al Riyadh
P.O.Box: 148, Riyadh 11411 - K.S.A.
Tel: + 966 56 455 8266
info@medicagroup.com

LEBANON

Medica Pharmaceuticals s.a.l.

Jal el Dib, Main Road Mallah Center, 11th Floor
P.O.Box: 90601 Jdeideh, Beirut - Lebanon
Tel: + 961 4 710 973
Fax: + 961 4 710 977
info-me@medicagroup.com



ISO 9001: 2008
Certificate No.: 04-B-07-QMS 0039



medicagroup.com

BRANDS PORTFOLIO

Experts in equipping Clinics, Spas, Beauty and Medical Centers

21 YEARS OF SUCCESS UNDER ONE ROOF!

FIRST TO GET THE LATEST

21
YEARS AND COUNTING...



LEADERS IN EQUIPMENT & MEDICAL AESTHETIC SOLUTIONS

LEVANT

GCC

AFRICA

WE HELP PEOPLE LOOK BETTER

Leader in providing **Complete Beauty Solutions** for Medical Aesthetic Clinics, Dentists and Beauty Aesthetic Centers, setting high standards and providing high quality products.



OUR PORTFOLIO VERTICALS

<p>AESTHETIC EQUIPMENT</p> <ul style="list-style-type: none"> • Hair Removal • Tattoo/Vascular/Pigmentation • Slimming Concept • Facial Treatments • Liposuction • Sweet & Odor Treatment • Sclerum • Hair Transplant • Support Devices 	<p>MEDICAL AESTHETIC PRODUCTS</p> <ul style="list-style-type: none"> • Injectables • Botulinum Toxin • Breast Implants • Thread Lift
<p>SKINCARE</p> <ul style="list-style-type: none"> • Skincare Equipments • Skincare Products 	<p>DENTAL DISTRICT</p> <ul style="list-style-type: none"> • CAD/CAM • Anaesthetics • Dental Imaging • Treatment Units • Aesthetic Dentistry • Oral Surgery • Instruments & Sterilization • Dental Optics & Furniture

LET'S STAY CONNECTED!

Medica's unique business model provides clinics and doctors with everything for their business from training on the latest products, to marketing & practice management skills across the region.

OUR VALUE PROPOSITION



Practice Management



Proactive Marketing Initiatives



Consultancy



Educationally Oriented



Regional Network



Unparalleled Service



Tried & Tested Products

CONNECT WITH US

We will be sharing with you all educational Webinars and Practice Management Sessions

A Glimpse of our Digitally Activated brand to support you better

Ultherapy VENUS VIVA VENUS LEGACY cooltech primelase HR

ExoCoBio inmode VelaShape II PicoPlus miraDry

Restylane SCULPTRA Motiva ARTAS ips SMARTRION ips QMAX

NeoGraft MICROAIRE EMSculpt neo HydraCool PCA skin

sr2 AROSHA WIQO crisalix

PLANMEGA KLOCKNER KULZER WGH

SUMITOCAL OPTIK formlabs dental Aidite septodont

@MedicaGroupME @medicagroup @medicagroup @medica_group @groupmedica medicagroup.com info@medicagroup.com

AESTHETIC EQUIPMENT

- Hair Removal
- Tattoo / Vascular / Pigmentation
- Slimming Concept
- Facial Treatments
- Liposuction
- Sweat & Odor Treatment
- Solarium
- Hair Transplant
- Support Devices

MEDICAL AESTHETIC PRODUCTS

- Injectables
- Botulinum Toxin
- Breast Implants
- Thread Lift

SKINCARE

- Skincare Equipments
- Skincare Products

DENTAL DISTRICT

- CAD/CAM
- Anaesthetics
- Dental Imaging
- Treatment Units
- Aesthetic Dentistry
- Oral Surgery
- Dental Instruments & Sterilization
- Dental Optics & Dental Furniture

HAIR REMOVAL

REVOLUTIONARY SYSTEM
3 IN 1 TECHNOLOGIES

NEW! All wavelengths
in one system

Combined 810nm, 940nm
and 1060nm

1060
nm
810
nm
940
nm

USP
ULTRASHORT PULSE



primelase



755 nm, 810 nm, 940 nm AND 1060 nm

PAINLESS DIODE LASER HAIR REMOVAL SYSTEM WITH
ALEXANDRITE AND ND:YAG TECHNOLOGIES

- Painless Hair Removal
- All skin types, all year long
- Immediate results from the first session
- Constant cooling system providing stable temperature of 5°C
- Highest peak power in the market
- Different spot sizes: 20x9mm - 30x9mm - 30x17mm
- 2 modes: Static and Dynamic
- Advanced interface with guided mode



cocoon
MEDICAL

FACIAL TREATMENT

ONE MILLION LIFTS
one beautiful world

More than 1.5 Million Ultherapy Treatments
Performed Worldwide

THE ONLY FDA-APPROVED
& NON-INVASIVE PROCEDURE
FOR LIFTING

Ultherapy®



MICROFOCUSED ULTRASOUND

- Skin color independence
- Proven results that last 1 year or more
- Bridges the gap between injectables and surgery
- Unique DeepSee™ technology

DEPTH:

- Localized heating at precise depth with no effect on the skin surface

TEMPERATURE:

- Consistently reaches coagulative temperatures (60°-70°)
- Denatures collagen and initiates neocollagenesis

PRECISION:

- Precise spacing between coagulation points to promote healing
- Repeatable treatment delivery

NEWBEAUTY Award winner for The Best Nonsurgical
Skin Tightener Treatment for 7 consecutive years.



MERZ AESTHETICS

HAIR REMOVAL

ALEXANDRITE &
ND:YAG LASER



igs
SMARTRION

ALEXANDRITE ND:YAG LASER

IDS SMARTRION COMBINES 755 NM
ALEXANDRITE AND 1064 NM ND:YAG LASER
FOR SAFE AND EFFECTIVE TREATMENTS ON
ALL SKIN TYPES ALL YEAR LONG.



1 Hair Removal 2 Vascular Lesions 3 Pigmented Lesions 4 Skin Rejuvenation

TATTOO REMOVAL/ VASCULAR/ PIGMENTATION

EXTREMELY POWERFUL
& COMPACT Q-SWITCH
ND:YAG LASER



igs
QMAX

QSWITCHED ND:YAG LASER

- QSwitched 532 nm and 1064 nm for superficial & deep pigments removal
- Pulse to Pulse Technology (PTP) mode
- Multi-Wavelength System

ADVANTAGES

- High energy and frequency
- Homogeneous laser beam profile
- Ergonomic & intuitive user interface
- Unique articulated arm
- Stable power energy supply
- Accurate & uniform beam quality:
Perfect Top Hat Mode



SLIMMING CONCEPT

THE ONLY NON-INVASIVE PROCEDURE TO BUILD MUSCLE AND BURN FAT

The next step towards the future



BAHRAIN, QATAR,
OMAN, LEBANON, KSA

SLIMMING CONCEPT

THE WORLD'S FIRST
& ONLY TECHNOLOGY
THAT USES
RADIOFREQUENCY
AND HIFEM+



The
one
in Body
Shaping

EMSCULPT®



BODY SCULPTING & MUSCLE GROWTH

EMSCULPT IS THE NEXT STEP TOWARDS THE
FUTURE OF NON-INVASIVE BODY SHAPING.

- The world's only procedure that simultaneously addresses both muscle and fat
- Revolutionary solution for a non-invasive butt lift
- Expanding your addressable patient population by:
 - Patient seeking improvement in muscle and fat
 - Patient who are not candidates for current body shaping procedures
- Patient looking for non-invasive butt lift alternative

+16%

average increase
in muscle mass

-19%

average
fat reduction



TWO BENEFITS WITH ONE THERAPY

Muscle
Growth

Fat
Disruption

No Surgery • No Downtime



EMSCULPT neo®



ELIMINATE FAT AND BUILD MUSCLES NON-INVASIVELY

EMSCULPT NEO IS THE FIRST PROCEDURE
TO PROVIDE SIMULTANEOUS FAT
ELIMINATION AND MUSCLE BUILDING
IN A COMBINED 30-MINUTE SESSION.

- Fat Breakdown
- Muscle Warm-Up
- Supramaximal Contraction
- After Treatment

LESS

-30%
Fat

+25%
Muscle

MORE

on average*

HIFEM+

RF



SLIMMING CONCEPT | COMBINATION THERAPY

WHAT IS MEDICA'S SLIMMING CONCEPT?

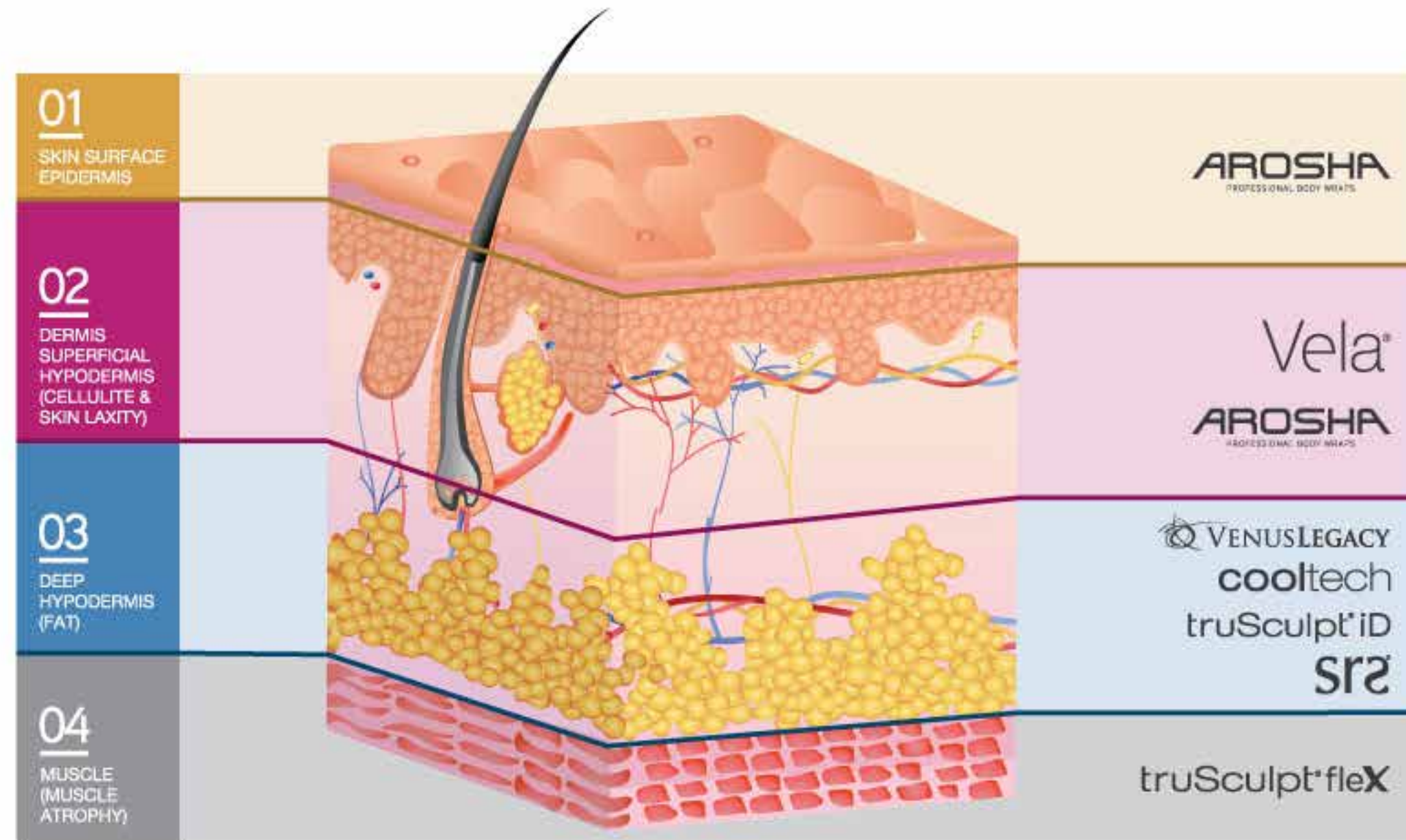
A COMBINATION OF DIFFERENT, MOST EFFECTIVE AND NON-INVASIVE TECHNOLOGIES

- Solving different problems (Skin Laxity, Muscle Toning, Cellulite, Fat, Water Retention).
- Reducing excessive body fat within a minimal time period.
- Guaranteed patient satisfaction in short time.



ONE CONCEPT SOLUTION TO ALL BODY PROBLEMS

WE HAVE COMBINED DIFFERENT DEVICES & TECHNOLOGIES TO GIVE YOU THE BEST RESULTS IN SLIMMING & RESHAPING



SLIMMING CONCEPT



WINNER
of the best non-invasive
body shaping device

VelaShape®



CIRCUMFERENTIAL REDUCTION

VELASHAPE IS DESIGNED TO REDUCE CENTIMETERS AROUND "PROBLEM" AREAS SUCH AS THE WAIST, HIPS, THIGHS, STOMACH & ARMS. IT TARGETS & HEATS FATTY TISSUES & EVENS OUT THE SKIN TO REVEAL A SMOOTHER, TIGHTER FIGURE

- Circumferential Reduction
- Cellulite Treatment
- Skin Tightening & Body Contouring
- Technology: Infrared Light, Radio Frequency, Vacuum and Mechanical Tissue Manipulation



VelaShape III®

VelaShape II®

SLIMMING CONCEPT

THE ADVANCED SOLUTION FOR CHALLENGING AESTHETICS

Body Contouring

Cellulite Reduction

Skin Tightening

Wrinkle Reduction



VENUSLEGACY



(MP)² + VARIPULSE TECHNOLOGY

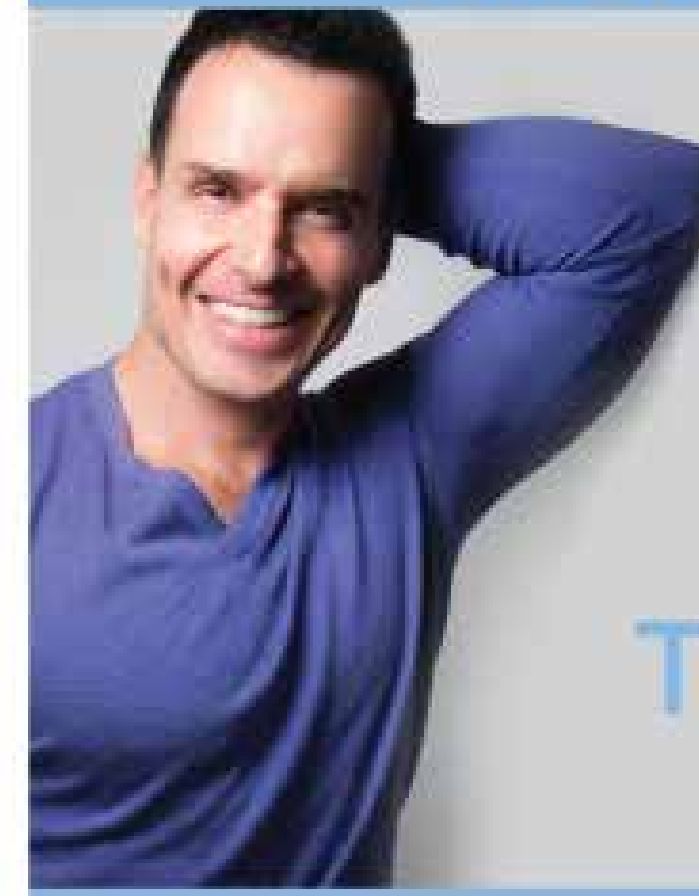
THE HIGHLY ADVANCED NON-INVASIVE MEDICAL DEVICE THAT MOST EFFECTIVELY RESOLVES CHALLENGING FACE AND BODY AESTHETIC NEEDS, SUCH AS NON-SURGICAL CELLULITE REDUCTION AND WRINKLE REDUCTION.

- Innovative (MP)² Technology
- Synergetic combination of Multi-polar frequency (RF) and pulsed electro magnetic fields (PEMF)
- Advanced Varipulse™ Technology
- Enhances the lipolysis effects of RF energy, increases blood circulation, and stimulates lymphatic drainage.
- Real-time thermal feedback
- 4 unique applicators



VENUSCONCEPT

SWEAT & ODOR TREATMENT



UNDERARM SWEAT & ODOR TREATMENT



miraDry



MICROWAVE TECHNOLOGY

BREAKTHROUGH NON-INVASIVE TECHNOLOGY ELIMINATES UNDERARM SWEAT GLANDS TO SIGNIFICANTLY REDUCE UNWANTED SWEAT AND ODOR.

- Lasting and stable efficacy
- Strong safety profile
- Up to 93% patient satisfaction
- Minimal to no downtime
- Over 50,000* procedures performed so far
*2018 statistics



THE TECHNOLOGY

MiraDry uses microwave energy to heat and eliminate sweat glands.



SLIMMING CONCEPT

4 SIMULTANEOUS
APPLICATORS FOR

360°
BODY CONTOURING

cooltech 
D E F I N E

CRYOADIPOLYSIS

SAFE AND EFFECTIVE TREATMENT, WHICH
ALLOWS TO ACHIEVE EXCELLENT RESULTS
AND HIGH PROFITABILITY IN A
VERY SHORT TIME.

- Accurate diagnosis
- 4 simultaneous applicators in one session
- 360 degrees complete cooling of the treated area
- 9 different applicators that fit perfectly
- 9 treatment templates



COOLTECH APPLICATORS



SLIMMING CONCEPT

SHAPE YOUR PERFECT BODY!

Non-invasive full body contouring



cooltech 
LET THE COLD TRANSFORM YOUR LIFE

LOCALIZED FAT REDUCTION

EFFECTIVELY REDUCES LOCALIZED
ADIPOSE TISSUE USING A CONTROLLED
COOLING SYSTEM

- Safe and effective
- Pain free and non-invasive
- Visible results starting 15 days after one procedure
- Allows an immediate incorporation to the patient's daily life
- 2 independent applicators
- Up to 25% localized fat reduction in one session



COOLTECH APPLICATORS



FACIAL TREATMENT

PLASMA TECHNOLOGY

NON-INVASIVE PROCEDURE



Plexx® Plus



PLASMA TECHNOLOGY

AN INNOVATIVE TECHNOLOGY BY GMV BASED ON THE IONIZATION OF GAS INTO PLASMA. SUBLIMATION IS THE PHASE TRANSITION OF A SUBSTANCE DIRECTLY FROM THE SOLID TO THE GAS PHASE WITHOUT PASSING THROUGH THE INTERMEDIATE LIQUID PHASE.

- Display Touch Screen
- Three Different handpieces
- Wireless Handpieces
- Upgradable Software



Effective



Safe Procedure



All Skin Types



Immediate Results



High Precision



Non-Invasive

GMV

FACIAL TREATMENT

Skin Resurfacing System

Nano-fractional RF™ Technology



*VENUS*VIVA



SKIN RESURFACING

THE FIRST AND ONLY NANO-FRACTIONAL RADIO FREQUENCY (RF) SYSTEM THAT ALLOWS OPERATOR CONTROL OF ABLATION AND COAGULATION FOR ENHANCED EFFICACY IN RESOLVING MILD TO SEVERE SKIN DAMAGE.

- Highly customizable parameters for wide range of skin conditions
- Reduce signs of skin damage
- High patient satisfaction
- Low downtime
- Higher Return on investment
- Nanofractional RF applicator

Diamondpolar™
Applicator



Nanofractional RF™
Applicator



Acne Scars & Rosea

Enlarged pores & deep wrinkles

Stretch marks & Pigmentation

Dyschromia & uneven texture

*VENUS*CONCEPT

HAIR TRANSPLANT

THE COMPREHENSIVE SOLUTION FOR HAIR RESTORATION

Automated Follicular Unit Extraction (FUE)
and implantation technology



NeoGraft®



HAIR RESTORATION

AUTOMATED FOLLICULAR UNIT EXTRACTION (FUE) AND IMPLEMENTATION SYSTEM THAT LEAVES NO LINEAR SCAR AND IS MINIMALLY INVASIVE WITH FAST PATIENT RECOVERY.



Intuitive touchscreen

Automatic, real-time extract and implants graft counts and patient data management eliminates manual counting and paperwork.



Wireless connectivity



Optimized workflow

Double-jointed arm and enhanced ergonomics ensure comfortable procedures for both patients and physicians



VENUSCONCEPT

HAIR TRANSPLANT

THE INTELLIGENT ROBOTIC HAIR TRANSPLANT TECHNOLOGY

Delivering exclusive, customized hair restoration solutions to your patients.



ARTAS®

ROBOTIC HAIR RESTORATION



HAIR RESTORATION

PRECISE, EFFICIENT, & REPEATABLE HARVESTING WITH SIMULTANEOUS RECIPIENT SITE-MAKING & IMPLANTATION FUNCTIONALITY IN A SINGLE, COMPACT PLATFORM.



Artificial Intelligence Integration



State-of-the-art medical grade hardware



Touchscreen user interface and Artas hair studio



High definition multi-camera stereoscopic vision system

1. HARVESTING

AI capabilities, machine learning, and dynamic guide systems enable precise and intelligent follicular tracking and dissecting

2. SITE-MAKING

Proprietary AI algorithms accurately identify and create optimal recipient sites while protecting existing hair

3. IMPLANTATION

Simultaneous graft implantation increases operational efficiency, consistency, and repeatability



VENUSCONCEPT

LIPOSUCTION



PAL® 650 LipoSculptor™

POWER ASSISTED LIPOSUCTION

THE INNOVATIVE PAL® LIPOSCULPTOR™ IS THE ONLY U.S.-PATENTED LIPOSUCTION INSTRUMENT USING A RECIPROCATING MOTION (RATHER THAN ROTATING) TO FACILITATE THE MOVEMENT OF THE CANNULA, GLIDING THROUGH FIBROUS TISSUE MORE EASILY.

- Less bruising and bleeding
- Stem cell and lipofiling possibilities
- Fast procedure



lipoFilter Mini



lipoFilter

MICROAIRE®

SOLARIUM



RECHARGE YOURSELF

VITAMIN D STIMULATOR

ULTRASUN

SAFEST SOLARIUM

ULTRASUN IS AN ULTIMATE RECHARGE AND RELAXATION SYSTEM. IT IS A HIGH PERFORMANCE MACHINE THAT MAXIMIZES THE TANNING EXPERIENCE.

- Maximized tanning experience
- Stimulates vitamin D3 production
- Enhances bone structure
- Boosts immune system
- Relieves pain
- Features and options:



UltraSun I9
64 LAMPS



UltraSun I8
48 LAMPS



UltraSun E7
48 LAMPS



UltraSun E6
42 LAMPS



UltraSun E5
30 LAMPS

AESTHETIC EQUIPMENT

- Hair Removal
- Tattoo / Vascular / Pigmentation
- Slimming Concept
- Facial Treatments
- Liposuction
- Sweat & Odor Treatment
- Solarium
- Hair Transplant
- Support Devices

MEDICAL AESTHETIC PRODUCTS

- Injectables
- Botulinum Toxin
- Breast Implants
- Thread Lift


SKINCARE

- Skincare Equipments
- Skincare Products

DENTAL DISTRICT

- CAD/CAM
- Anaesthetics
- Dental Imaging
- Treatment Units
- Aesthetic Dentistry
- Oral Surgery
- Dental Instruments & Sterilization
- Dental Optics & Dental Furniture

INJECTABLES



Activate Skin Power

GALDERMA
EST. 1981

Cheeks, mid face, lower face


SCULPTRA®



INTRODUCING
Sculptra THE ORIGINAL
biostimulator

- Renews the skin's structure.^{1,7}
- Stimulates collagen production.^{3,7}
- Restores natural skin firmness for lasting results.^{4,5}
- Proven safety and high patient satisfaction.^{1,8,10}

RECOMMENDED TREATMENT PROTOCOL



2-3 treatment sessions spaced 4-6 weeks apart.



On average, use 1 vial of Sculptra per 10 years of the patient's life (volume required will vary depending on the patient's volume loss and age).

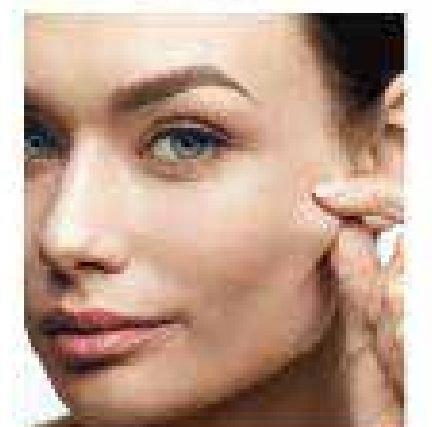


Results last up to at least 25 months and can be maintained by performing a smaller re-stimulation treatment every 2 years.

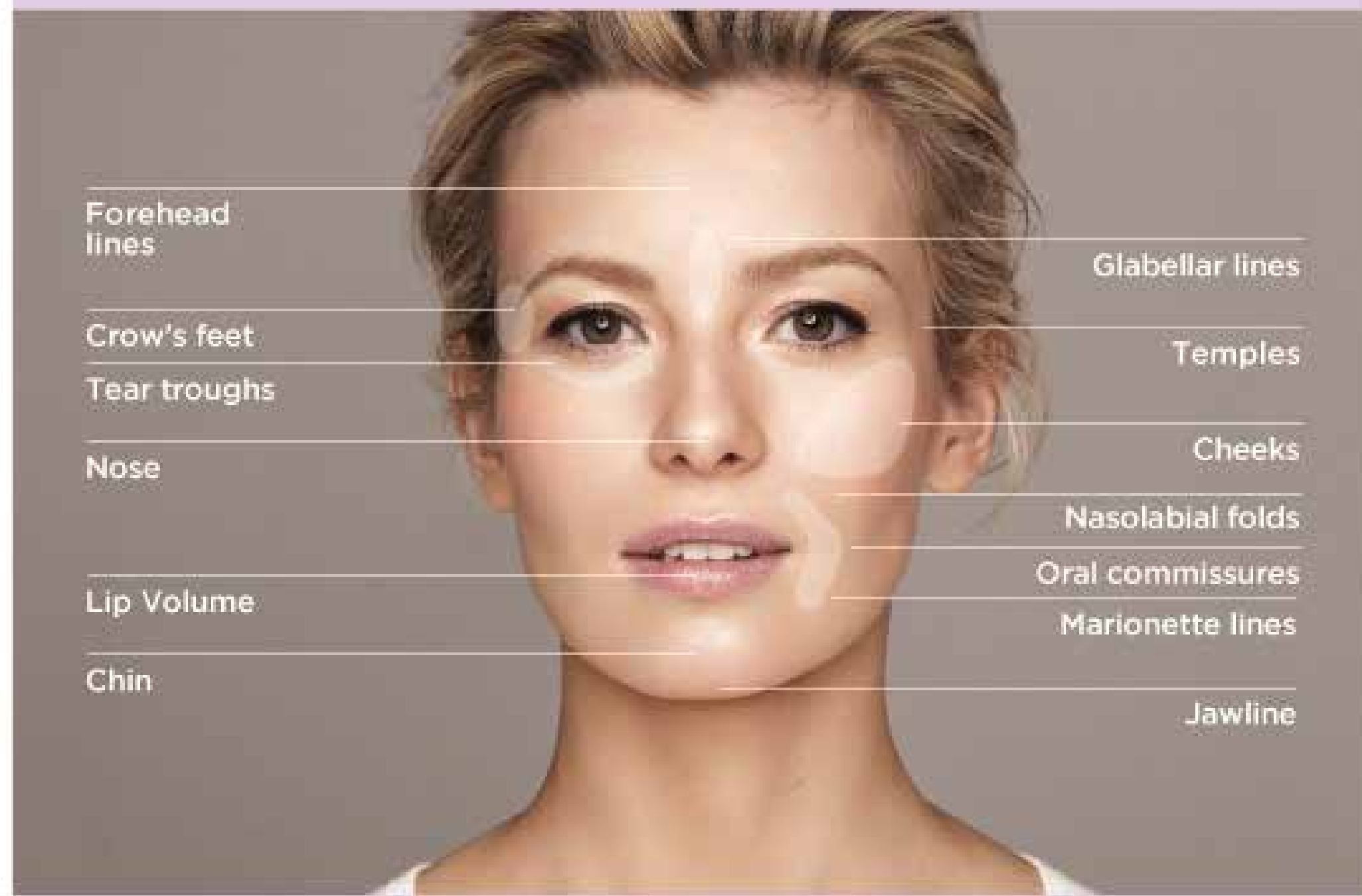


It is better to under-treat and add more Sculptra at a later date, minimizing the risk of over-correction.

ASSESSING SKIN ELASTICITY



INJECTABLES



Restylane
Natural Elegance

GALDERMA
EST. 1981

YOUTHFUL & ENHANCED APPEARANCE

- Fill lines and wrinkles
- Replace lost fullness and volume loss due to aging
- Create harmony and balance
- Enhance shape, contour, and definition



RESTYLANE VOLUME



RESTYLANE REFYNE



RESTYLANE DEFYNE



RESTYLANE KYSSÉ



RESTYLANE LYFT



RESTYLANE



INJECTABLES



Restylane
SKINBOOSTERS™

GALDERMA
EST. 1981

THE ORIGINAL TREATMENT TO IMPROVE SKIN QUALITY

- Improve skin elasticity
- Reduce fine lines
- Lessen skin imperfections, such as discrete depressed acne scars



SKINBOOSTERS VITAL



SKINBOOSTERS VITAL LIGHT



BODY FILLERS

The New Generation Of Body Fillers



GENEFILL

Bio | SCIENCE

THE NEW GENERATION OF BIPHASIC HYALURONIC ACID BODY FILLERS FOR SOFT TOUCH AND NATURAL-LOOKING EFFECTS

- Safe Application
- Injection Control
- First-Class Quality
- Smooth Gel
- Effortless Administration

Genefill **CONTOUR**



Genefill **CONTOUR PLUS⁺**



BREAST IMPLANTS



Motiva[®]
implant matrix

SUPERIOR BREAST AESTHETICS

WITH MORE THAN 30 YEARS OF ADVANCED BREAST IMPLANT MANUFACTURING EXPERIENCE, BUILDING QUALITY BREAST IMPLANTS HAS ALWAYS BEEN A NATURAL OUTCOME FOR ESTABLISHMENT LABS'S FOUNDERS AND TOP EXECUTIVES.

- SilkSurface™: Non-abrasive controlled nanosurface
- ProgressiveGel Plus™ and ProgressiveGel Ultima™: for optimum Silicone Gel performance
- Ergonomix™: the look and feel of a natural breast
- TrueMonobloc®: Full geometric design to significantly reduce rippling and wrinkling
- BluSeal®
- Q Inside safety technology
- TwinPack™
- 3D Simulation



MotivaHybrid™

The leading Fat Transfer company in the world.

**SIMPLE.
STERILE.
SUPERIOR FAT.**



SUPPORT DEVICE

THE SOLUTION
TO YOUR PATIENTS'
RECURRENT
SURGERY
QUESTIONS
& PROBLEMS



3D, 4D & VR & AR IMAGING SOLUTION

ATTRACT. EDUCATE. CONVERT
WITH THE LEADING 3D, 4D VR & AR
IMAGING SOLUTION AND BUSINESS PLATFORM

- Scan your patient in 3D
- Modify the simulation to achieve the desired results



98% would recommend Crisalix to their friends.

99% would recommend their surgeon.

94% felt satisfied with their 3D during consultation.



BOTULINUM TOXIN



IN-LEBANON ONLY



BOTULINUM TOXIN

CLOSTRIDIUM BOTULINUM TOXIN TYPE A
(HALL STRAIN)

- Global smart toxin for cosmetic and therapeutic use
- Temporary improvement of moderate to severe facial wrinkles
- Temporary reduction of muscles uncontrolled activity



Cosmetic & Therapeutic Use | 1 Million Neuronox Treatment



Neuronox
50 UNITS



Neuronox
100 UNITS



Neuronox
200 UNITS

AESTHETIC EQUIPMENT

- Hair Removal
- Tattoo / Vascular / Pigmentation
- Slimming Concept
- Facial Treatments
- Liposuction
- Sweat & Odor Treatment
- Solarium
- Hair Transplant
- Support Devices

MEDICAL AESTHETIC PRODUCTS

- Injectables
- Botulinum Toxin
- Breast Implants
- Thread Lift

SKINCARE

- Skincare Equipments
- Skincare Products

DENTAL DISTRICT

- CAD/CAM
- Anaesthetics
- Dental Imaging
- Treatment Units
- Aesthetic Dentistry
- Oral Surgery
- Dental Instruments & Sterilization
- Dental Optics & Dental Furniture

SKINCARE PRODUCTS

THE NEEDLE-FREE BIOREVITALISATION



PRX-T[®]₃₃
WIGO

NON-INVASIVE BIOREVITALISATION

THE BREAKTHROUGH CONSISTS IN COMBINING TRICHLOROACETIC ACID (TCA) WITH HYDROGEN PEROXIDE (H₂O₂) AT A VERY PRECISE PH LEVEL. THE TWO SUBSTANCES INTERACT AT A CELLULAR LEVEL, PROVIDING PREVIOUSLY UNSEEN BENEFITS FOR THE SKIN

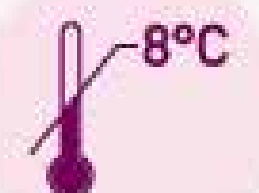


ADVANTAGES

- Non-aggressive on the epidermal layers, no frosting
- The treatment can be performed in the summer months
- The effects are immediately visible
- Ideal primer for other aesthetic medicine treatments, such as mesotherapy, fillers, threads, physical stimulation devices, PRP, radiofrequency, etc.
- Particularly appreciated by patients who dislike needles

COMPOSITION

- TRICHLOROACETIC ACID (%33)
- HYDROGEN PEROXIDE
- KOJIC ACID



Due to its unique, very active formulation, the product must be stored at max +8°C.

SKINCARE EQUIPMENT



Hydracool

FACE & HAIR PROTOCOL

MULTI-FUNCTIONAL DEVICE COMBINATION OF 8 IN 1 SKIN AND SCALP TREATMENT SYSTEM

- 8 applicators for optimum skin care
- Various preset programs
- Powerful oxygen compressor
- Simple and easy operation

- DEEP CLEANSING
- FACIAL GLOW
- OXYGENATION
- VITAMINS



Oxygenation and peeling



Wrinkle, acne, couperose, cellulite, cleansing, scaling, lifting, vitamins



+ ion | - ion
lifting and vitamins



Solution spraying



SKINCARE EQUIPMENT



HydraCool^{Plus}

SKIN MANAGEMENT PLATFORM

THIS MULTIFUNCTIONAL DEVICE OFFERS A VARIETY OF TREATMENTS USING THE SYNERGY OF 4 TECHNOLOGIES IN ONE PLATFORM

- 4 applicators
- 4 Technologies
- User friendly software
- Easy to operate

DEEP CLEANING

WRINKLE REDUCTION

SKIN TIGHTENING

SKIN LIGHTENING



AquaB



VibroX



Collagen+



UltraB



SKINCARE PRODUCTS



The Ultimate Skin Therapy

FACE

BODY

HAIR

sr2®

TRANSDERMAL THERAPY

DELIVERING PROVEN, NON-INVASIVE SOLUTIONS, SRS IS A TRUSTED, EUROPEAN SKIN CARE AND AESTHETICS BRAND DESIGNED FOR PROFESSIONAL AND RETAIL USE

- Complete range of Ready Mix cocktails
- Range of individual advanced components
- Post treatments skin care line
- Rejuvenates skin and gives instant glow & youth

PROFESSIONAL LINE:

- Face
- Body
- Scalp / Hair

RETAIL LINE:

- Anti-Ageing
- Whitening
- Repairing
- Protecting



New!

SRS Salmon DNA

SPN-5 | SPN-6 (SPN-5 + Collagen Booster)

Skin Regeneration •
Wrinkles & Skin Imperfections •

SKINCARE PRODUCTS



Combined solutions
for optimal results.



Hydracool & sr2®

SKIN MANAGEMENT COMBINATION

MULTIFUNCTIONAL DEVICE FOR FACE AND SCALP TREATMENTS.

- Skin Rejuvenation
- Facial Glow
- Oxygenation
- Hair Restoration

OXY JET PEEL	ULTRASOUND
Oxygenation and peeling	Wrinkle, acne, couperose, double chin, cleansing, scaling, lifting, vitamins
IONTOPHORESIS	SPRAY
Transdermal delivery of vitamins and nutrients, facial muscle lifting	Solution spraying



SKINCARE PRODUCTS



BO-PEN
Micro - Needle Therapy System

BO-PEN | SUPPORT DEVICE

MICRONEEDLE TRANSDERMAL THERAPY SYSTEM USED FOR THE TREATMENT OF FACE, NECK & HAIR. CAN BE USED WITH SRS MESOTHERAPY SOLUTIONS

- 33-G – 11 pin needles
- Adjustable needle depth (0.25 – 0.5 – 1 – 1.5 – 2 mm)
- Speed vibration from level 1 to 5

sr2

EXPERT MESO ROLLER

SPECIALIZED TOOL THAT REJUVENATES, BIO- STIMULATES AND INDUCES COLLAGEN SYNTHESIS. CAN BE USED WITH SRS MESOTHERAPY SOLUTIONS FOR FACE, SCALP & BODY

- 540 diamonds shaped tips
- Multiple depths available
- Thinner needles

FACE, NECK AND HAIR

0.25 mm 0.5 mm 1 mm 1.5 mm 2 mm

SKINCARE PRODUCTS



PCA skin

ADVANCED PEEL FORMULATIONS

FOR MORE THAN 30 YEARS, PCA SKIN® HAS BEEN A TRUSTED PROFESSIONAL SKINCARE INDUSTRY LEADER AND INNOVATOR. WE TAKE PRIDE IN FORMULATING HIGHLY EFFECTIVE PROFESSIONAL TREATMENTS THAT CORRECT PATIENTS' MOST BOTHERSOME SKIN CONCERNS TO TRANSFORM SKIN HEALTH.

THE PCA SKIN® ADVANTAGES

- Leaders in ingredient combination
- Clinically backed up by clinical research and science
- Progressive approach
- Formulated for every skin type and condition, even if the most sensitive
- Treat challenging skin conditions for face and body
- Safe and efficient
- Self-neutralizing
- No downtime
- Free from synthetic dyes and other known sensitizers
- Customizable treatments for every skin condition



PROFESSIONAL LINE



RETAIL LINE

FACE & BODY SOLUTIONS

Wrapping Technology System for Reshaping Body Contours

MatrixTech Biocellulose
for a Perfect Skin



AROSHA

FACE & BODY SOLUTIONS

AROSHA BODY

AN OPTIMAL AND EFFECTIVE SOLUTION
AGAINST CELLULITE, ORANGE PEEL SKIN,
WATER RETENTION, LOSS OF TONE AND
ELASTICITY.

- Pressomassage maximizes the results of the wraps by reducing the water retention
- Effective range of body wrapping treatments
- Fast, effective, hygienic and easy application
- Eliminates toxins

AROSHA FACE

NATURALLY SYNTHESIZED FROM RICE
SOURCE BY BACTERIA THROUGH A
FERMENTATION PROCESS CONVERTING
SUGAR AND OTHER ORGANIC COMPONENTS
INTO FIBERS OF BIOCELLULOSE.

- Supply of long lasting moisture
- Superior adhesion material that imitates skin texture
- High transferring efficiency
- Environment-friendly (pure, natural & hypo-allergenic)



FIRMING

OEDEMACEL

ADIPOCEL

POWER CLEANSE

DEFENCE

CELLULAR LIFT

AGE RESOLUTION

ILLUMINA C

Sensational Skin Care

For all skin types

FACE

BODY



oligodermie
PARIS

FACE & BODY AESTHETIC SOLUTIONS

RICH & SPECIFIC RANGE OF SKIN CARE PRODUCTS
ADVISED BY YOUR THERAPIST IN THE CHOICE OF
YOUR BEAUTY PROGRAM.

CLUB FACE

- Cleansing
- Hydrating
- Refreshing
- Whitening

CLUB BODY

- Scrub
- Modeling
- Thinning
- Remodeling



AESTHETIC EQUIPMENT

- Hair Removal
- Tattoo / Vascular / Pigmentation
- Slimming Concept
- Facial Treatments
- Liposuction
- Sweat & Odor Treatment
- Solarium
- Hair Transplant
- Support Devices

MEDICAL AESTHETIC PRODUCTS

- Injectables
- Botulinum Toxin
- Breast Implants
- Thread Lift

SKINCARE

- Skincare Equipments
- Skincare Products

DENTAL DISTRICT

- CAD/CAM
- Anaesthetics
- Dental Imaging
- Treatment Units
- Aesthetic Dentistry
- Oral Surgery
- Dental Instruments & Sterilization
- Dental Optics & Dental Furniture

MEDICA DENTAL DISTRICT

The Digital Revolution is changing the world:
Even in dentistry, digital technologies are rapidly
advancing: intraoral, desktop and face scanners, cone
beam computed tomography (CBCT), software for
Computer Aided Design & Computer Aided Milling
(CAD/CAM) and fabrication procedures like milling and 3D
printing are changing the way we treat our patients.

COMPLETE DIGITAL WORKFLOW

PLANMECA



• ALL IN ONE SOFTWARE •

Planmeca Romexis®

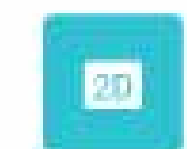
Planmeca Romexis® is the most powerful dental software platform in the world. It offers a rich selection of tools and features for all needs and specialties. Romexis brings together all Planmeca equipment at a dental clinic - from CAD/CAM technology to imaging devices and dental units.

- All-in-one dental software
- Open and compatible
- No yearly renewal fees
- Free system upgrade
- Superior usability
- Flexible collaboration
- Grows with your clinic

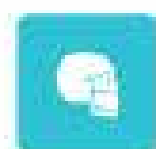


Romexis® Different Modules

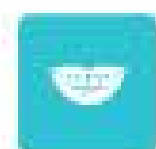
Planmeca Romexis® is a unique imaging software that supports all types of dental imaging from 2D and 3D to CAD/CAM. All data can be acquired, viewed and diagnosed in one easy-to-use software platform and stored in one centralised database.



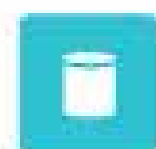
2D Imaging



2D Cephalometry



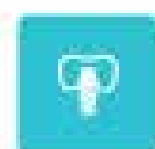
Smile Design



Dental PACS



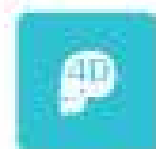
3D Imaging



3D Implantology



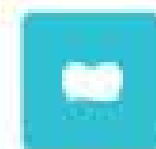
CMT Surgery



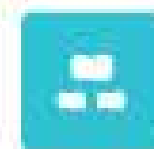
4D Jaw Motion



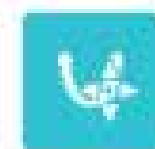
Models



CAD/CAM Easy



CAD/CAM Premium



3D Orthodontics

TREATMENT UNITS

PLANMECA

**EXCEPTIONAL QUALITY.
ERGONOMIC DESIGN.**

An exceptional range of dental care units,
combining the very best in ergonomics
with outstanding patient comfort



Treatment Units

Intelligent and versatile dental units that are the perfect choice for any clinic. Their sleek Scandinavian design not only pleases the eye but also enhances ergonomics and makes treatments more comfortable for patients. Packed with features and functionalities, the dental units offer the smartest user experience available in the world today.



Planmeca Solanna™ Vision

An intelligent light with integrated 4K cameras and microphones that allow you to take both still images and videos easily. A great tool for documentation, consultation and communication.

DENTAL IMAGING

PLANMECA

EXCEPTIONAL
QUALITY TO THE
FINEST DETAIL



Planmeca Viso™ G7

Our unique Planmeca imaging protocol is the world's leading method for acquiring 3D dental images at low effective patient doses.

Planmeca imaging software is the leading software platform for dentistry.

It provides a rich set of tools to meet the imaging requirements set by any dental facility.

- Live virtual Field Of View positioning
- Freely adjustable volume
- Planmeca CALM™ Movement artefact correction
- Planmeca Ultra Low Dose™ imaging
- Intelligent patient support



CAD / CAM

PLANMECA

BY DENTAL
PROFESSIONALS,
FOR DENTAL
PROFESSIONALS



Planmeca Emerald™ S

Intraoral scanning with superior captioning speed

- Outstanding usability – easier scanning experience
- Beautiful, vivid and natural colours
- Tooth shade assistant
- Caries detection
- Autoclavable tips with two sizes

Planmeca Creo C5

LCD printing technology and aluminium construction that allows highly fast and accurate printing

- Easy to take into operation – just plug and play
- Open Import for STL and PLY file formats
- Pre-programmed optimised material settings
- Very fast printing
- No calibration or fixed service intervals needed
- Industry quality at an accessible price

Planmeca PlanMill® 40 S

Fast and precise two-spindle milling

- 8-10 minutes per restoration only
- Automated tool changer for 10 tools
- Integrated Job Center PC



CAD/CAM

formlabs  **dental**

DIGITAL TRANSFORMATION MADE ACCESSIBLE



A next-generation dental 3D printing ecosystem and certified workflows from the leader in dental 3D printing.

Form 3B:

The Next Generation of Dental 3D Printing, Built for Production

- Developed specifically for healthcare.
- Unprecedented reliability, quality, and ease of use.
- XY Resolution: 25 microns
- Advanced Low Force Stereolithography (LFS)™ technology
- Flexible resin tank
- Reduced peel forces lead to incredible surface finish and part clarity
- Build Volume: 14.5 x 14.5 x 18.5 cm 5.7 x 5.7 x 7.3 in
- Print 2-3 times more parts in a single build compared to small build plate DLP printers
- 55% less labor time and costs compared to DLP.



Form Wash & Form Cure:

The Perfect Finish, Every Time

- Form Wash agitates isopropyl alcohol (IPA) to perfectly clean your parts, then raises them to air dry once finished. Simply set the appropriate time and let Form Wash get to work. Once washing completes, parts air dry and are ready when you are.
- Form Cure includes custom settings that maximize material performance, ensure consistent dimensional accuracy, and meet biocompatibility requirements for each Formlabs material with just the push of a button.



ANAESTHETICS



Dentine Restoration

Biodentine : Minimizing droplet & aerosol generation with ART technique and Biodentine™. Treat deep caries with minimal aerosol exposure.

- Avoid aerosol generation
- Save the tooth
- Reduce the chance of odontogenic infection
- Manage pain



Pain Management:

Septoject : your standard needle for any anesthetic procedure

- Excellent tissue penetration achieved with a high-quality triple-bevel needle with polished and siliconized cannula.
- High grade surgical stainless-steel tubing to reduce risk of breakage.
- Bevel mark to ensure good orientation of the bevel.
- Plastic hub with metric and US fittings.

Septanest : Septanest has earned the trust of dental professionals throughout the world

- Eliminates risk of shattering, for increased safety - Mylar wrapped cartridges
- Avoids the problems of longer onset and more painful injections correlated to lower pH levels - pH: 4.0 to 5.5 -
- Increased peace of mind for practitioner, regarding patient allergy - 100% latex free
- Terminal sterilization that guarantees dental professionals and patients the highest degree of sterility, for safety

AESTHETIC DENTISTRY



KULZER
MITSUI CHEMICALS GROUP

**GIVING A HAND
TO ORAL HEALTH**

covering cosmetic dentistry



Charisma Diamond

The nano-hybrid composite charisma diamond expands the boundaries of aesthetics, quality & performance. You expect from such an aesthetic state-of-the-art composite.

- Minimum Shrinkage
- Shrinkage Stress
- Very Smooth Surface
- High Resilience
- Optimized Surface Hardness
- Chameleon Effect
- Provides an Extended Working Time



Gluma Desensitizer

For over 20 years, one drop of GLUMA has been sufficient to reduce and prevent hypersensitivity. The results appear quickly and effectively, without mixing, curing or multiple applications.

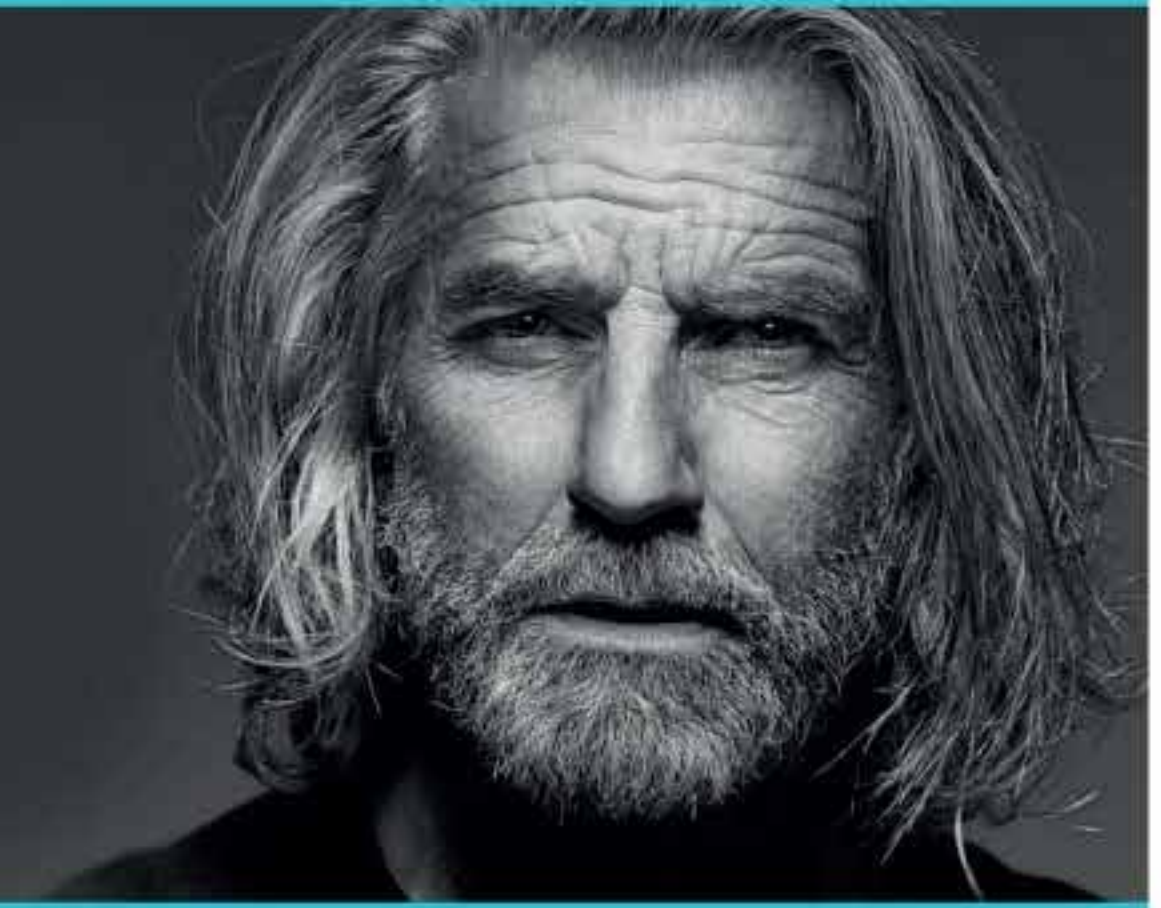
- The only desensitizer that has been proven to penetrate exposed dentinal tubules up to be 200 µm1.
- Block bacteria: forms a hermetic seal which traps the bacteria and prevents bacterial growth.
- Re-wetting: reorganises collapsed collagen fibres and improves the adhesiveness of several adhesives.



ORAL SURGERY

**Freedom
is not
fixed**

K KLOCKNER



VEGA+

The VEGA+ implant is a self-tapping, dual threading implant with easy insertion that makes it possible to tackle compromised anatomical areas where bone density is low.

- OPTIMUM® - Titanium improvement up to 64% in mechanical properties
- ContacTi® surface - Allows to load the implants in 4 weeks
- High mechanical stability
- Optimal torque for immediate loadings
- Whole range of prosthetic solutions

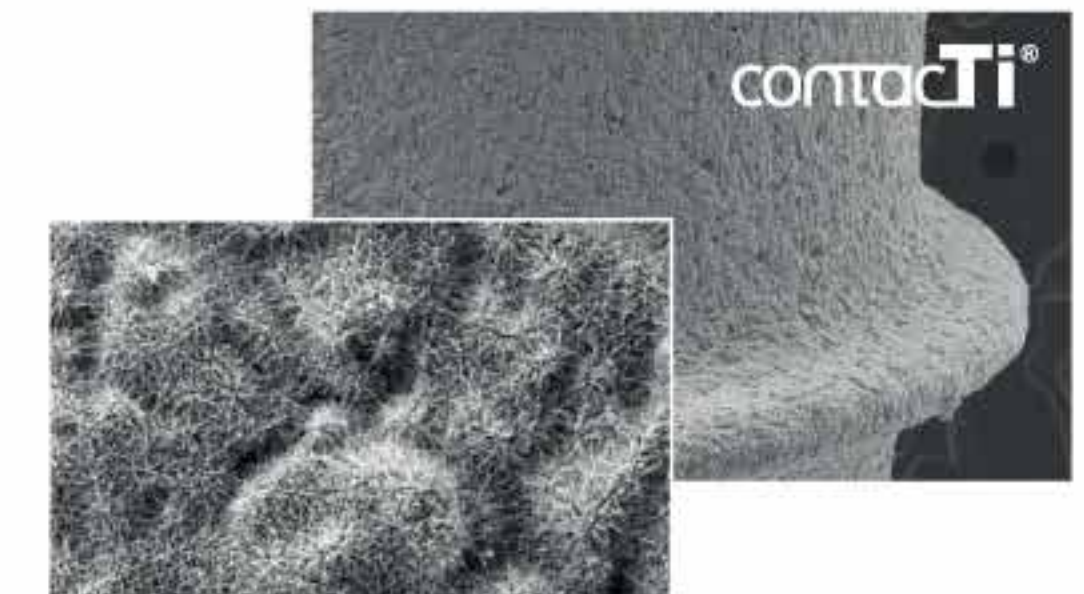


Ø 3.1 MM Ø 3.6 MM Ø 4.1 MM Ø 4.6 MM

ContacTi®

ContacTi® has been designed to achieve the highest success rates in all clinical case.

- Achieves bone-implant contact levels of over 75% after the first 2 weeks and 80% after 3 weeks
- Allows definitive implant loading 4 weeks after implant placement



DENTAL INSTRUMENTS & STERILIZATION



RESTORATION & STERILIZATION

Synea Vision Turbines

High-end technology for excellent preparation results characterized by high performance & optimal ergonomic.

- Maximum torque and optimal power
- Ring LED+ 100% shadowless illumination
- Optimum cooling with 5x spray
- Scratch-resistant surface
- Ceramic ball bearings



Lisa Sterilizer

Built for highest demands: incredibly user-friendly with a complete traceability down to the single instrument.

- High capacity data logger
- Customized to your needs
- User identification
- Load release confirmation
- Intuitive interface & perfect ergonomics



DENTAL OPTICS & DENTAL FURNITURE



COMPLETE YOUR CLINIC

High performance microscope | Furniture beyond design

CJ-Optik Twin Blue & white Flexion Microscope

With their state-of-the-art selective filter system, the Twin Microscope meets the highest requirements of modern dentistry.

- Sensor Unit
- Light boost up to 200,000 Lux with TWIN White
- Four different Filter System
- Phone-Imaging Port
- Patented MonoBall coupling for free movement
- Fluorescent Light



Saratoga Dental Furniture

The first choice for professionals looking for reliable, long-lasting furniture developed and manufactured for practicality and made in Italy design.

- Reliability beyond design
- High-quality tried and tested materials
- Maximum hygiene guaranteed
- Modularity and functionality

