

A NEW DIMENSION IN BODY SCULPTING

truSculpt® is a non-invasive RF system optimized to deliver *Targeted, Repeatable* and *Uniform* sculpting of problem areas for a *TRU 3D* result



truSculpt®

OUR WORLD IN 3D

We see the world in **3D**—we observe *dimension*, we notice *definition*, we perceive *depth*.

But imagine a new kind of **3D** that can reshape *dimension*, improve *definition* and reduce the overall *depth*.

truSculpt® takes a multi-dimensional approach to body sculpting and circumferential reduction by delivering clinically therapeutic temperatures to the subcutaneous adipose tissue to achieve the highest clinical efficacy in the shortest possible treatment time. This *Targeted, Repeatable* and *Uniform* approach ensures **TRU 3D** results are achieved.

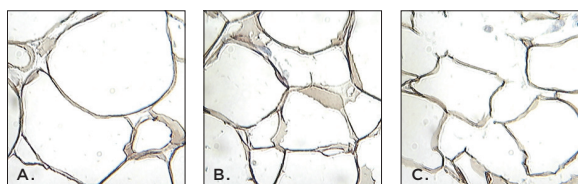


Figure 1. Metabolic activity in subcutaneous tissue.
Pre-treatment (A) 4 weeks post treatment (B)
10-12 weeks post treatment (C)

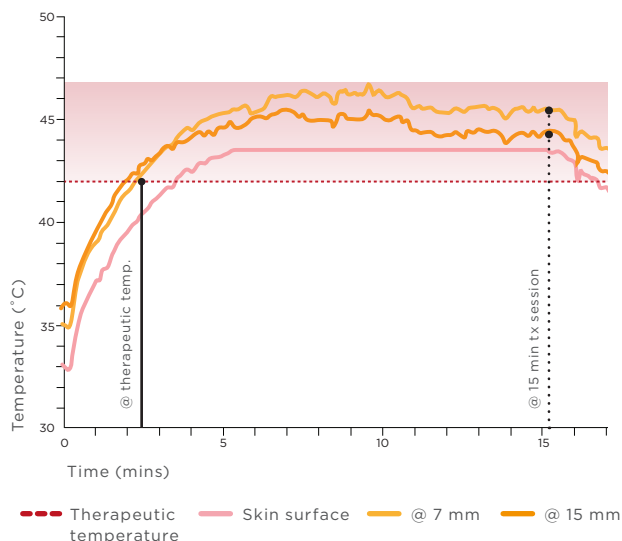


Figure 2. truSculpt achieves heat inversion—higher temperature inside the skin compared to surface skin temperature

TARGETED

truSculpt features an optimized RF frequency and delivery method to achieve selective, targeted disruption of the subcutaneous adipose tissue (Figure 1), while maintaining lower average surface temperatures. (Figure 2)

REPEATABLE

truSculpt is the only non-invasive RF platform to feature a proprietary closed-loop temperature feedback mechanism to ensure that therapeutic temperatures are met, patient comfort is maintained, and clinical efficacy is achieved throughout each fifteen minute treatment session.

UNIFORM

truSculpt's patented handpiece design delivers uniform heat to the area, eliminating potential hot spots and enhancing patient safety and comfort. (Figure 3)

truSculpt 3D RESULTS

Offer your patients the look they want—and the non-invasive procedure they demand. **truSculpt 3D** offers the consistently impressive results you expect from CUTERA.

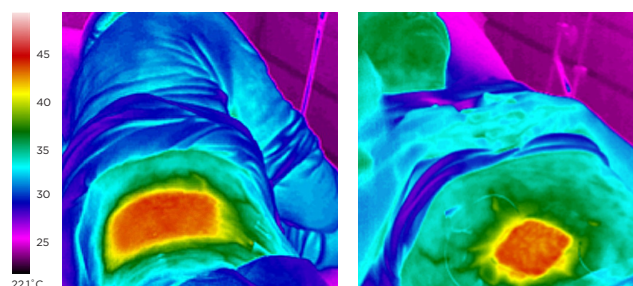


Figure 3. Uniformity across treatment area (left)
Uniformity across electrode (right)



Baseline

12 weeks post One tx



DECREASE CIRCUMFERENCE, DIMINISH FAT

truSculpt **3D** gives you the flexibility to address today's most common non-invasive body sculpting concerns. Decrease circumference and diminish fat on areas large and small with truSculpt's two handpiece options.

truSculpt®



40 cm²

for larger areas,
including the abdomen
and flanks



16 cm²

for small areas, petite
patients or anatomically
difficult areas

DISCOVER AN INCREDIBLE NEW FIGURE

Combine four fifteen minute treatments in one session for a truSculpt **3D** body sculpting result.

STUDY DESIGN

- Monopolar radiofrequency treatment with target temperatures of > 44 °C
- 13 subjects received one truSculpt **3D** treatment on the abdomen and flanks
- 15-minute exposure time on each flank and 30-minute exposure time on the abdomen for a total of 60 minutes
- Photographs and ultrasound were performed at baseline and follow-up

STUDY RESULTS

- Photographs and ultrasound evaluations showed positive improvement post one treatment
- Patients tolerated the treatment well, with no downtime or prolonged discomfort following the treatment. Average pain scores between 2-4 out of 10
- A single 60-minute truSculpt **3D** treatment provided results consistent with other non-invasive body sculpting technologies



Baseline

SUBJECT A

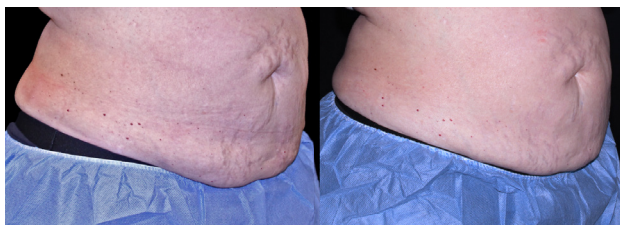
12 weeks post One tx



Baseline

SUBJECT B

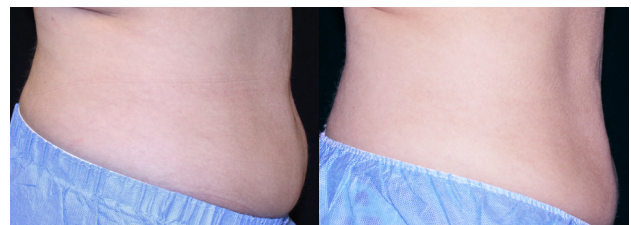
12 weeks post One tx



Baseline

SUBJECT A

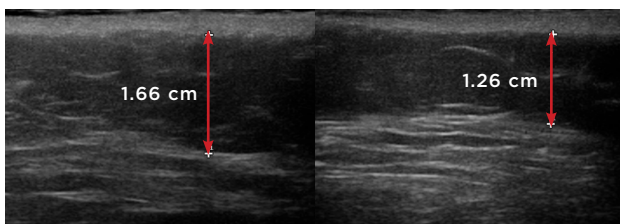
12 weeks post One tx



Baseline

SUBJECT B

12 weeks post One tx

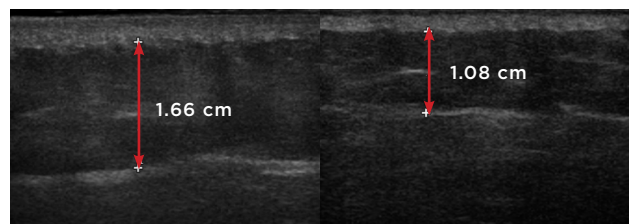


Baseline

SUBJECT A

12 weeks post One tx

Right flank ultrasound of SUBJECT A:
4 mm FTR or 24%



Baseline

SUBJECT B

12 weeks post One tx

Right flank ultrasound of SUBJECT B:
5.8 mm FTR or 35%

TECHNICAL SPECIFICATIONS

| | | |
|--------------------|-------------------------|--------------------|
| Technology | Radio frequency (RF) | |
| Maximum Power | 150 W | |
| Frequency | 2 MHz | 1 MHz |
| Spot-size | 40 cm ² | 16 cm ² |
| Console Dimensions | 12.5" W x 36" H x 21" D | |
| Console Weight | 50 lbs | |
| Console Electrical | 900 VA, 100-240 V | |



CUTERA, Inc. WORLD HEADQUARTERS

3240 Bayshore Boulevard • Brisbane, California 94005 USA

p: 888 4-CUTERA or 415 657 5500 • **f:** 415 330 2444

©2017 Cutera, Inc. All rights reserved. AP1348 Rev C (4/17)