



oligodermie  
PARIS



Solely Distributed by:

DUBAI  
Medica Trading LLC

Tel: + 971 4 4370 669  
Fax: + 971 4 4370 668  
info@medicagroup.com

ABU DHABI  
Medica Trading LLC

Tel: + 971 2 6581 619  
Fax: + 971 2 6581 612  
info@medicagroup.com

KSA  
Medica - RIC

Tel: + 966 11 4654 113  
Fax: + 966 11 4630 135  
info@medicagroup.com

LEBANON  
Medica Pharmaceuticals s.a.l.

Tel: + 961 4 710 973  
Fax: + 961 4 710 977  
info-me@medicagroup.com

SINGAPORE  
Medica Singapore Pte Ltd

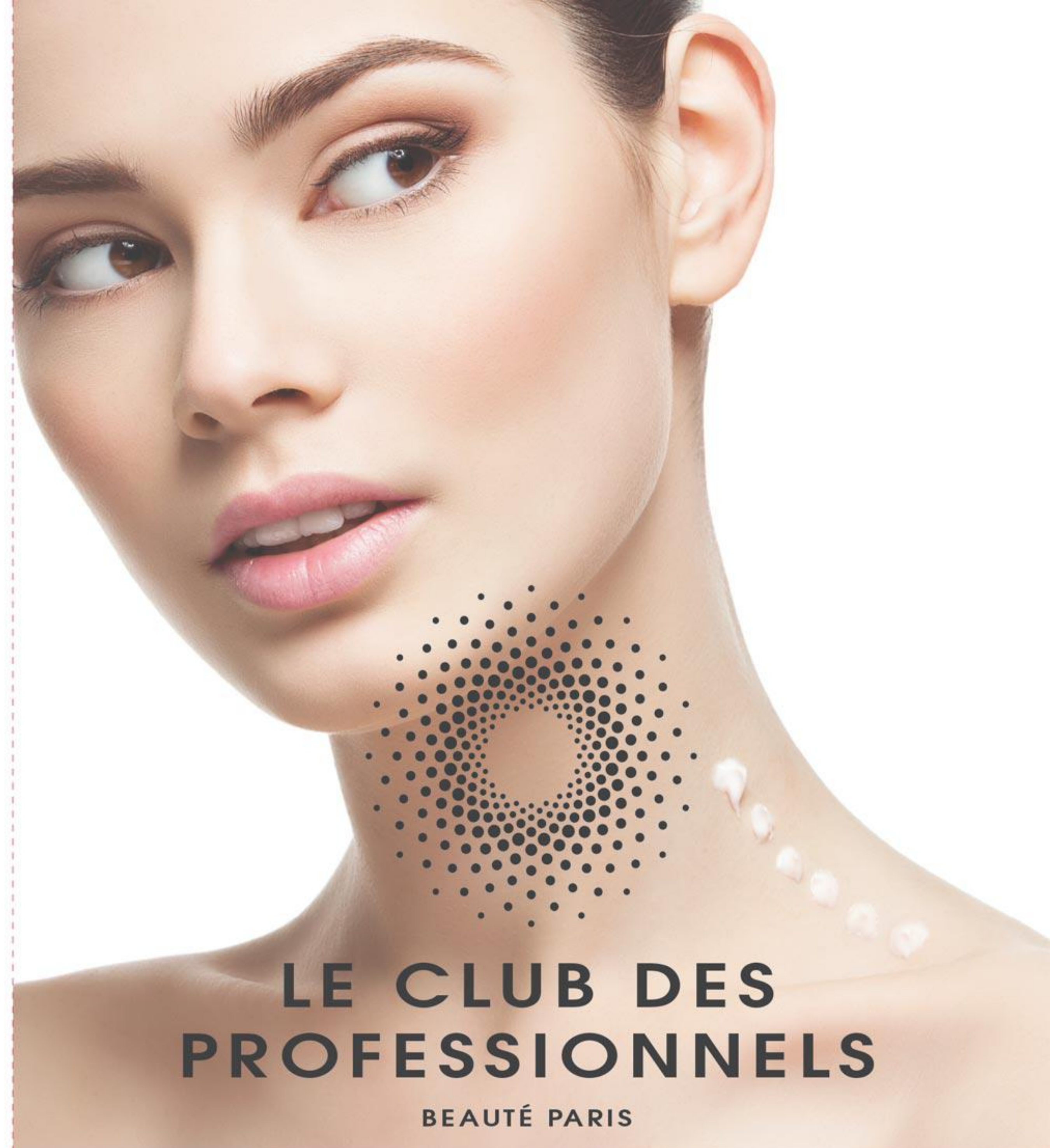
Tel: + 65 67 33 96 89  
Fax: + 65 67 33 96 91  
info-sg@medicagroup.com



www.medicagroup.com



© Medica Creative



LE CLUB DES  
PROFESSIONNELS

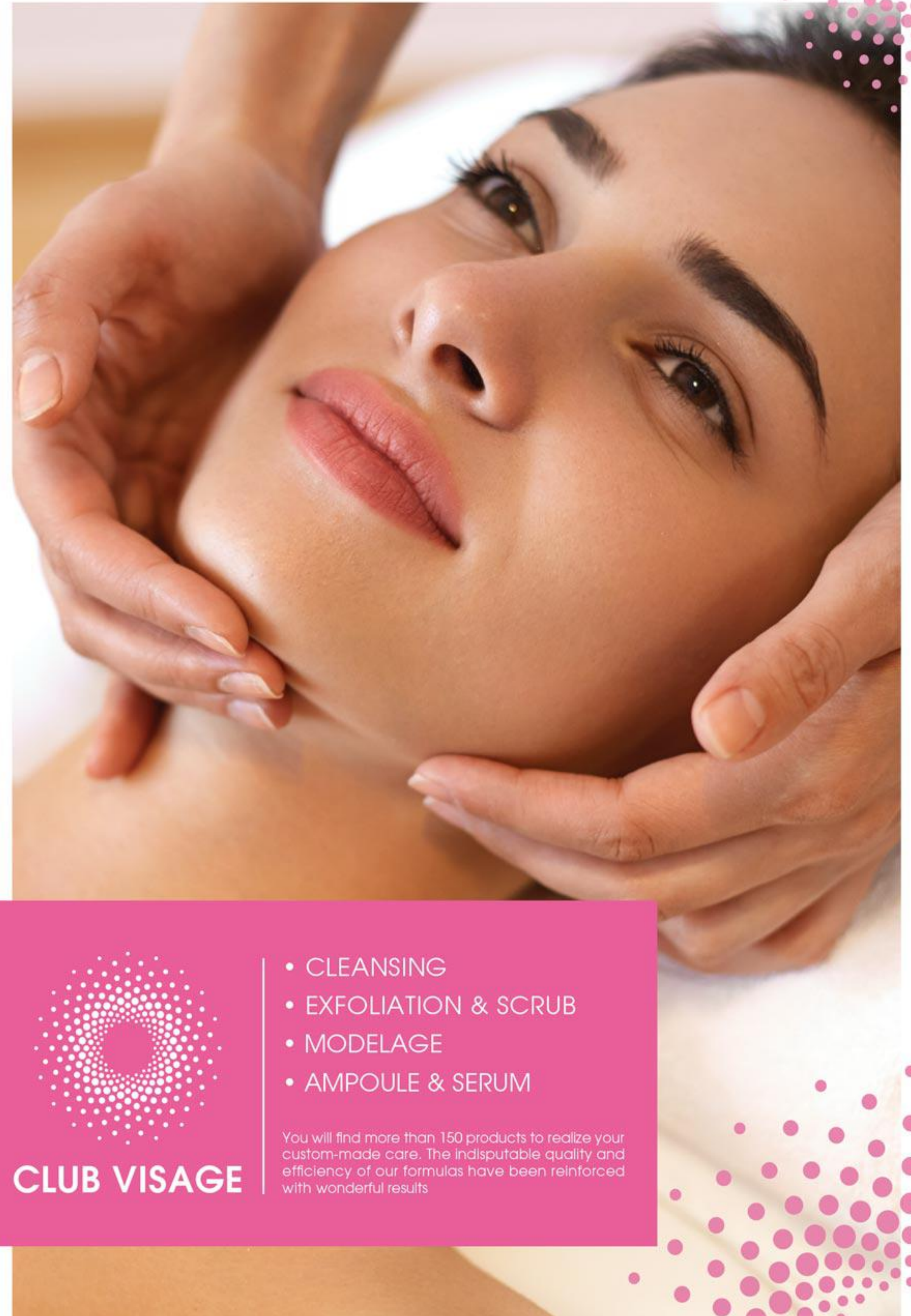
BEAUTÉ PARIS

FULL BRAND CATALOG

- Sublime Your Talents -

oligodermie  
PARIS





**CLUB VISAGE**

- CLEANSING
- EXFOLIATION & SCRUB
- MODELAGE
- AMPOULE & SERUM

You will find more than 150 products to realize your custom-made care. The indisputable quality and efficiency of our formulas have been reinforced with wonderful results



# CLUB FACE

## CLEANSING



ELIMINATING MAKEUP & IMPURITIES

### CLEANSING MILKS

### TONING LOTIONS

ALCOHOL-FREE



#### CLEANSING MILK WITH CALENDULA

To eliminate makeup and impurities perfectly. Very consistent allowing a careful cleaning. Light perfume.

Sensitive skin   
Bottle 1 L ref. CA 29



#### TONING LOTION WITH CALENDULA

ALCOHOL-FREE

Sensitive skin   
Bottle 1 L ref. CA 30

### New formula



#### CLEANSING MILK WITH COTTON EXTRACT

Normal & Combined Skin   
Bottle 1 L ref. CA 02



#### TONING LOTION WITH WITCH HAZEL

ALCOHOL-FREE

Normal & Combined Skin   
Bottle 1 L ref. CA 05  
Bottle 100ml ref. EC 02

 All skin types  Combined skin  Mature skin  Dry skin  Lightening  Oily skin  Sensitive skin  Devitalized skin



ELIMINATING MAKEUP & IMPURITIES

### CLEANSING

### MAKEUP REMOVERS



#### INSTANT CLEANSING FOAM

A convenient and easy to use foam for all skin types. Its innovative formula is a lotion texture which turns instantly into a rich and smooth foam. The foam is rinsed away with water leaving a perfectly cleansed skin with a tingling fresh sensation.

All skin types   
Pump Bottle 200ml ref. CA 14



#### GENTLE EYE MAKEUP REMOVER

This bi-phased eye makeup remover with peach extract removes all makeup even intense while respecting the delicate eye contour area. It contains several active: Peach Extract, rich in Vitamin B, C and E known for its soothing and revitalizing properties. The Cornflower Floral Water, soothing and regenerating

All skin types   
Pump Bottle 200ml ref. CA 64



### “New”

#### GENTLE MICELLAR WATER

The micellar water is a cleansing lotion. It perfectly removes make-up and impurities while leaving the skin soft and fresh.









All skin types   
Bottle 500ml ref. CA 65



#### EYES MAKEUP REMOVER

Contains Cornflower extract. Gently cleanses the eye area.

All skin types   
Bottle 500ml ref. CA 03

 All skin types  Combined skin  Mature skin  Dry skin  Lightening  Oily skin  Sensitive skin  Devitalized skin



# CLUB FACE

## EXFOLIATION & SCRUB



### EFFECTLY REMOVING DEAD SKIN CELLS



#### VEGETAL ENZYMATIC SCRUB

To eliminate makeup and impurities perfectly. Very consistent allowing a careful cleaning. Light perfume.

All Skin Types

Jar 200 ml

ref. CA 36



#### VELVET SCRUB GEL ARGAN & JOJOBA

This amber gel gently scrubs dead cells and restores the skin radiance.

- Jojoba wax and argan fruits powder are very gentle, natural exfoliating ingredients.
- The damask rose floral water acts as a toner and astringent.

All Skin Types

Jar 250 ml

ref. CA 63

### Chemical Scrub

#### EXFOLIATING GEL WITH FRUIT ACIDS

**Beauty results:**  
Restores radiance and transparency complexion.

**Active ingredients, their actions:**  
Complex with fruit acid and salicylic acid. Keratolytic agents which reduce the cohesion of dead cells to facilitate their elimination. Lactic acid & green floral notes Perfume



All Skin Types

Jar 250 ml  
Jar 50 ml

Amount per treatment: 15 ml.

ref. CA 37  
ref. EC 38

### New

#### VITAMIN SCRUB GEL KIWI MANGO

Scrub with Kiwi grains and gel texture for gentle exfoliation of the face. Made up of three fruit extracts, this complete treatment eliminates dead cells and impurities.

**Active ingredients**  
Kiwi extracts rich in vitamin C with antioxidant properties. Mango extract with moisturizing virtues. Pineapple extract, rich in sugar and vitamins, energizing and detoxifying properties for brightness.



Sensitive skin

Jar 250 ml

ref. CA 67

### New formula

#### SCRUB CREAM WITH BAMBOO EXTRACT

Exfoliating cream with fine particles from natural bamboo for thicker skins. Contains cucumber extract, rich in minerals and vitamins. Brings new brightness to the complexion.



**Mechanical scrub with particles**

Combined & Oily Skin

Jar 250 ml

ref. CA 24

### New formula

#### GENTLE SCRUB CREAM

Gentle facial scrub dedicated to sensitive skin.

The dead cells are removed without skin irritation.

Contains Cotton Flower with soothing properties.

Apply a very thin layer, let it dry for 3-2 minutes and scrub in a circular motion.



Sensitive skin

Jar 250 ml  
Jar 50 ml

ref. CA 10  
ref. EC 05

• All skin types • Combined skin • Mature skin • Dry skin • Lightening • Oily skin • Sensitive skin • Dehydrated skin

# CLUB FACE

## MODELAGE • DESINCRUSTATION



### PROFESSIONAL MODELAGE RITUALS



#### MODELAGE CREAM

The formulation of this skin care product allows a remarkable modelage. The balance of base ingredients prevent the product from penetrating too quickly into the skin and maintain the perfect "slip" for a successful modelage. The moisturising and soothing ingredients nourish and give both suppleness and elasticity. The Calendula and Linden extracts give a soothing and calming effect whilst their anti-inflammatory effects help to prevent and to reduce redness.

All Skin Types

Jar 250 ml

ref. CD 06



#### MELTING HONEY WITH GOLD AND CAVIAR EXTRACT

This Melting Honey for Modelage is unique for professional ritual. Rich in Caviar extract this Melting Honey for Modelage releases its numerous benefits and leaves the skin silky & soft. The texture glides smoothly on skin's surface and transforms into three different textures: from a thick honey-like micro-emulsion, it turns to a smooth oily gel and then to a milky emulsion. The Caviar Extract is very rich in Vitamin A, D, B and trace elements as well as amino acids. Those ingredients intensify the processes inside the skin cells and at the same time slow down the ageing process by moisturizing. Caviar is a key ingredient to skin cell regeneration while Gold is known for its antioxidant.

Jar 250 ml

ref. CD 26



#### MODELAGE BALM WITH ESSENTIAL OILS

The texture of this balm which contains 3% of beeswax, 4% of Essential fatty acids Polyglycerides (substitute of Lanolin) and 1% of Laminaria Seaweed oils allows realizing a prolonged modelage of the face without necessarily to add more products. Three essential oils (Lavender, Cajeput for soothing, and Niaouli for purifying) conjugates their olfactive notes to optimize the relaxing effect of the modelage.

Oily Skin

Jar 250 ml

ref. CD 17



#### ICY MOUSSE

The skin is revitalized, fresh and very soft, comfortable and soothed.

**Active ingredients, their actions:**

- Seabuckthorn Oil (Hippophae Rhamnoides) rich in Vitamin E, carotenoids (provitamin A), and phyosterols. Protects, softens and revitalizes.
- Brown Seaweed Extract, Durvillea Antarctica concentrated in Alginic Acid (anti-free radical) and specific sugars (tolerance to cold). Protects the skin from external aggressions.
- Extract from brown seaweed Sargassum muticum. Remineralizing and nourishing.
- **Fragrance:** fresh aquatic fragrance.

Jar of 60g

ref. CF 58

• All skin types • Combined skin • Mature skin • Dry skin • Lightening • Oily skin • Sensitive skin • Dehydrated skin



# CLUB FACE

## SKINCARE VIALS & AMPOULES



CONCENTRATED IN ACTIVE INGREDIENTS

All the skincare vials contain very concentrated active ingredients and can penetrate into the skin with light effleurage modelage before a mask or mixed with the massage cream.

New

### GLYCOLIC ACID

AQUEOUS TEXTURE

It clarifies the complexion of the skin by eliminating dead skin cells. This exfoliation accelerates the cell renewal, helps to clean pores and to remove blackheads and blemishes.

It softens the skin and reduces skin imperfection. Not ionizable.



Oily Skin  
Skincare Vials 10 x 3 ml  
Dropper Bottle 30 ml

ref. CE 25  
ref. CE 04



### VITAMIN C

AQUEOUS TEXTURE

Contains extract of Acerola, small cherry naturally rich in Vitamin C known for its anti-free radical and invigorating. The presence of an extract of lemon enhances the energizing effect of this treatment on the skin while helping to restore a real glow to the complexion.

Not recommended for sensitive skins.

Devitalized skin  
Skincare Vials 10 x 3 ml  
Dropper Bottle 30ml

ref. CE 32  
ref. CE 52

### CALENDULA

MILKY TEXTURE

The Calendula flower extract has soothing and hydrating \*. It helps to reduce redness and soften dehydrated skin due to flavonoids and saponins it contains. Oil Apricot kernels enhances the softening qualities of this care.

\*of the upper layers of the epidermis



Sensitive & Devitalized Skin  
Skincare Vials 10x3 ml  
Dropper Bottle 30ml

ref. CE 35  
ref. CE 44

All skin types Combined skin Mature skin Dry skin Lightening Oily skin Sensitive skin Devitalized skin



CONCENTRATED IN ACTIVE INGREDIENTS

### CO-ENZYME Q10

OILY TEXTURE

The Coenzyme Q10 is a natural antioxidant necessary for the energy production within cells. Like the Vitamin E it is a lipophilic antioxidant. Therefore, the Coenzyme Q10 treatment contains Vitamin E. Nourishing, the Jojoba Oil has a remarkable affinity with the skin as its composition is closed to the skin sebum.



Dry & Mature Skin  
Skincare Vials 10 x 3 ml  
Dropper Bottle 30 ml

ref. CE 25  
ref. CE 04

New Formula

### BEAUTY INSTANT GLOW

AQUEOUS TEXTURE - Firming Effect & Instant Beauty

Contains hydrolysed wheat protein which fills a slight film tensor and smoothing the surface of the epidermis. Recommended use for a quick beauty before makeup or an instant beauty glow. Completed by applying a skin care cream if the skin is particularly dry or sensitive.



All Skin Types  
Skincare Vials 10 x 3 ml

ref. CE 28

New Formula

### LIGHTENING SERUM

AQUEOUS TEXTURE - Lights up complexion & diminishes dark spots

Lightening action based on the synergy of three plant extracts (Scutellaria, White Mulberry and Bearberry) that modulate the activity of tyrosinase, responsible for melanin synthesis enzyme.

Also contains an extract of licorice known to soften the skin and Mimosa Tenuiflora the restorative properties.



Lightening  
Skincare Vials 10 x 3 ml  
Dropper Bottle 30 ml

ref. CE 27  
ref. CE 51

New Formula

### SKIN CARE GEL IONIZABLE FOR DEVITALIZED SKIN

Contains ions Proline, Arginine, Lysine, Magnesium, Silicium.



Devitalized Skin  
200ml Bottle

ref. PO 06

### SKIN CARE GEL IONIZABLE

Contains ions Calcium, Potassium, Manganese, Phosphore, Magnesium.



All Skin Types  
200ml Bottle with pump

ref. PO 04

All skin types Combined skin Mature skin Dry skin Lightening Oily skin Sensitive skin Devitalized skin



# CLUB FACE

SKINCARE VIALS IONIZABLES IN NEGATIVE



CONCENTRATED IN ACTIVE INGREDIENTS

New



## HYALURONIC ACID

AQUEOUS TEXTURE

Intended for dehydrated skin, it promotes water retention in the epidermis. Restore the skin all its vitality.

Devitalized Skin —————   
Skincare Vials 10 x 3 ml ref. CE 05  
Dropper Bottle 30ml ref. CE 31



## COLLAGEN

SLIGHTLY GELLYFIED AQUEOUS TEXTURE WITH MARINE COLLAGEN

Thanks to its special affinity with the skin, marine collagen helps to restore optimal hydration level and to improve the mechanical properties of elasticity and firmness of the skin

Mature & Devitalized skin —————   
Skincare Vials 10 x 3 ml ref. CE 03  
Dropper Bottle 30ml ref. CE 43



## CAVIAR

AQUEOUS TEXTURE

Complete care thanks to the conjugation of 3 necessary active ingredients to protect the skin youth of the most demanding mature skins: Caviar Extract rich in essential nutrients, Marine DNA for the renewal Cellular and Hyaluronic Acid for a strengthened hydration\*

Mature Skin —————   
Skincare Vials 10 x 3 ml ref. CE 21  
Dropper Bottle 30ml ref. CE 54



## OXYGENATING

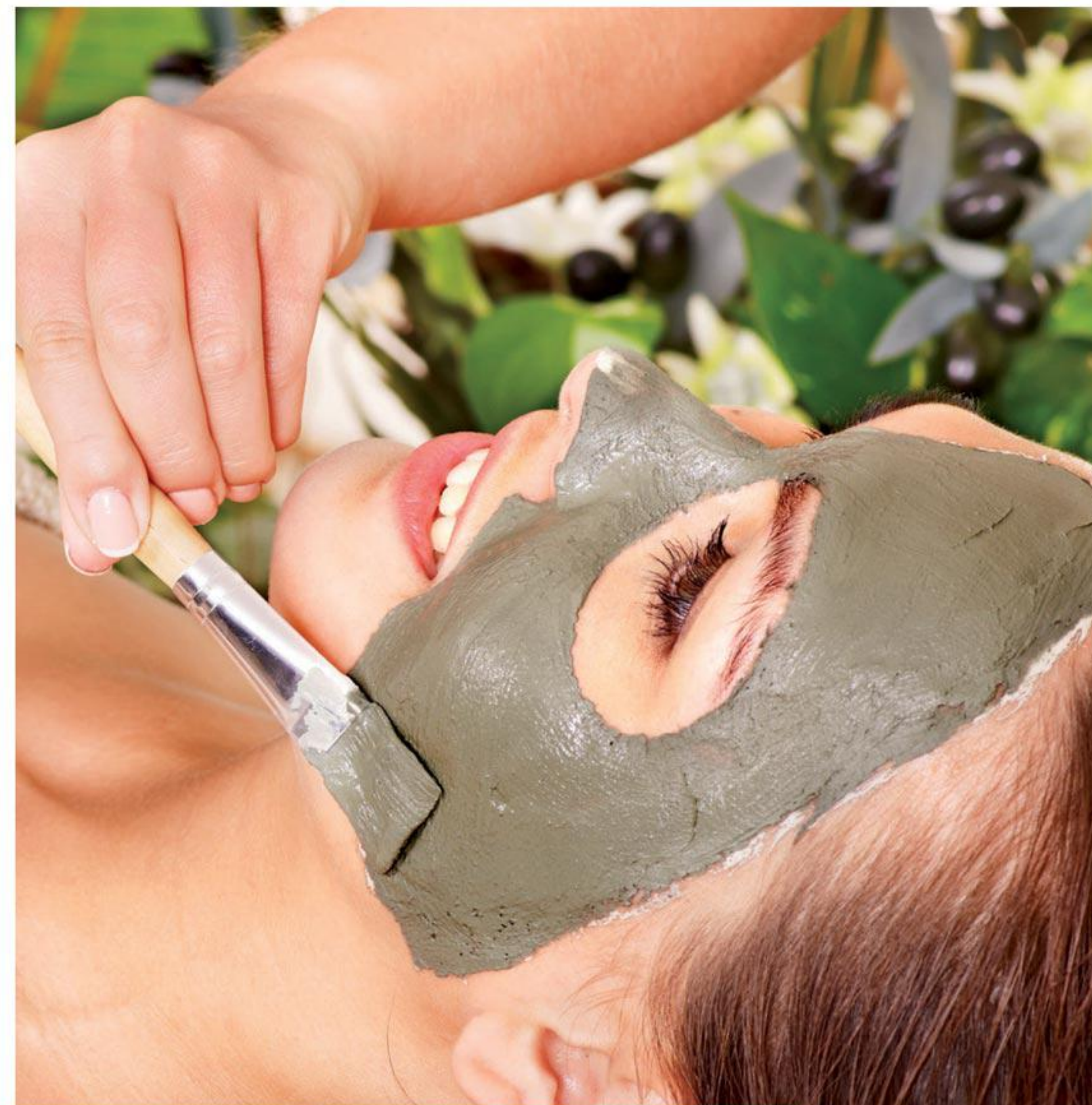
AQUEOUS TEXTURE

Intended for tired skin, asphyxiated by the pollution or fragile, based on plant extracts this care brings radiance and softness to the skin.

For a luminous complexion and a skin supple and revitalized.

Devitalized Skin —————   
Skincare Vials 10 x 3 ml ref. CE 06  
Dropper Bottle 30ml ref. CE 34

• All skin types • Combined skin • Mature skin • Dry skin • Lightening • Oily skin • Sensitive skin • Devitalized skin



CLUB VISAGE

- CREAM MASKS
- SPECIFIC SKINCARE MASKS
- ALGINATE MASKS
- THERMAL MASKS
- SHAKER MASKS



# CLUB FACE

## CREAM MASKS



# CLUB FACE

## CREAM MASKS



SOFT - NO DRY - CREAMY MASKS

These very soft masks will not dry. Their creamy texture is very pleasant to the application which is done in a semi-thick layer on the face and neck. Leave for 20 minutes. Remove with sponges moistened with warm water then apply your skincare cream suitable to your skin type.



### LINDEN MASK

Hydrating\* and softener  
\*of the upper layers of the epidermis

Devitalized skin —————   
Jar 250ml ref. CF 01



### STRAWBERRY MASK

Young oily skin, astringent, purifying and relaxing.

Oily Skin —————   
Jar 250ml ref. CF 03



### DEEP CLEANSING MASK

Contains 25% montmorillonite, the Green Clay has the ability to absorb impurities and all excess sebum without drying the skin. Laminaria Algae Extract (1%) rich in minerals (sodium, potassium and magnesium) revitalizes the skin by helping to maintain its water content. On the other side, the Calendula extract (1%) and Allantoin soothe often irritated oily skin. The skin is fresh and bright.

Oily Skin —————   
Jar 250ml ref. CF 06











### PURIFYING MASK WITH 3 CLAYS

Cleanses, balances and restores radiance to oily and combined skin.

- Green Clay: Absorbs excess sebum and other impurities
- White Clay: Very sweet, rich in silica remineralizing properties
- Red Clay: Known to revive dull skin

Oily Skin —————   
Jar 250ml ref. CF 48

 All skin types  Combined skin  Mature skin  Dry skin  Lightening  Oily skin  Sensitive skin  Devitalized skin



SOFT - NO DRY - CREAMY MASKS

### GENTLE SOOTHING MASK

TRANSLUCENT BLUE GEL

Beauty Results: Soothes and softens. Restores freshness and vitality to dehydrated skin.

Active Ingredients, their actions:

- Aloe Vera and Glycerin of vegetal origin. Moisturizing\* properties
- Extract Spirulina carried by liposomes of plant origin. Spirulina is a blue microalgae amino acids rich in nutrients and revitalizing properties
- Allantoin. Softening.
- Menthyl lactate. Cooling agent.
- Scent: floral notes slightly woody.

All Skin Types, Devitalized & Dry Skin —————   
Jar 250ml ref. CF 28



### GEL MASK WITH HYALURONIC ACID

Real bath of freshness for the skin, this pink translucent gel mask contains Hyaluronic Acid, an active naturally present in the skin and known for its ability to raise the water in the skin. This action is reinforced by the presence of Glycerin from vegetal origin.

In these two active ingredients, come to be added a Cotton extract and the Provitamin B5 (Panthénol) for a comforting effect on skins sensitized by its dehydration\*.

\* Upper layers of the epidermis

Oily Skin —————  
Tube 200ml ref. CD 33



### INTENSE SMOOTHING MASK

Beige creamy mask.

Beauty Result: Improving the texture of the mature skin (complexion, refined skin texture, fine lines and wrinkles less visible). Revitalizing action.









Active ingredients, their actions:

- Lactic Acid and Salicylic Acid. Keratolytic agents which reduce the cohesion of dead cells to facilitate their elimination.
- Ammonium Lactate. Acts on cell renewal and dehydration\*.
- Scent: fruity sweet.

\* upper layers of the epidermis



Mature Skin —————   
Jar 250ml ref. CF 37

 All skin types  Combined skin  Mature skin  Dry skin  Lightening  Oily skin  Sensitive skin  Devitalized skin



# CLUB FACE

## SPECIFIC SKIN CARE MASKS



# CLUB FACE

## ALGinate MASKS



### CREAMY PEEL-OFF MASKS



### MARINE PEEL-OFF MASKS

#### Perfectly Purified



#### HEATING & EXFOLIATING MASK WITH CRANBERRIES

This cream mask in the perfume of red fruit is at the same time a mask and an exfoliating scrub. It gives a sweet sensation of heating which facilitates the elimination of the impurities and dead cells thanks to the kaolin. Tannins contained in the pulp of cranberries play an astringent and antibacterial role. Besides, the oil of grape seeds also contains astringent virtues. It is an oily and light which penetrates into the skin without leaving any greasy sensation. It has the advantage to be particularly rich in Linoleic Acid. As for the seeds of cranberries, they exfoliate gently the skin.

**Indications:** For combination and oily skin, teenagers skins, mature skins which tend to thicken.

**Application:** Start with your usual cleansing procedure. Humidify slightly the face then apply in thick layer all the contents of the bag by avoiding the eyes area. Leaves 10 min and just before to take it off, massage during 30 seconds with fingers beforehand moistened to exfoliate. Then, rinse carefully with wet sponges

Oily Skin —————   
Bag 15g ref. CF 41

#### New

#### WIPPED MASK WITH AVOCADO OIL

Creamy and smooth texture for nourishing mask intended for dry skin.

##### Active ingredients:

- Avocado Oil: nourishing and repair properties.
- Sunflower Oil: rich in vitamins A, C, D and E. It protects sensitive skin and nourishes the skin.
- Amissoft: leaves a sensation of sweetness on the skin.

##### Instruction for use:

- Pour 40 ml of water at 20 ° C on 30 g of powder.
- Mix until obtaining a smooth paste.
- Apply to face by avoiding the eye contour.
- Leave on for 15 minutes
- Remove the mask and rinse.

Dry Skin —————   
Bag 30g ref. CF 38




#### HYDRATING MASK WITH VITAMIN C

This alginate mask quickly reduces redness on the face and moisturizes the upper layers of the epidermis

- Bilberry Extract: improves skin microcirculation and reduces redness.
- Vitamin C: antioxidant action. Prevents the skin cell ageing.\* Instrumental test conducted on 20 volunteers.

##### Instructions for use:

- Pour 90 ml of water at 20° C on 30 g of powder.
- Mix thoroughly and apply on the face, by avoiding the eye contour.
- Leave on for 15 minutes then remove in one piece.

Mature & Devitalized Skin —————   
Bag 30g ref. CF 64



#### New

#### PURIFYING MASK WITH DEAD-SEA SALT

This mask contains Marine Sediments which are going to cleanse your skin by absorbing the sebum and impurities that suffocate the skin, while giving a pleasant sensation of freshness.

The purifying action is amplified by two essential oils which are:

- Melaleuca, known under the name of Tea Tree which have purifying virtues.
- Lemon, renowned for its astringent power.

To complete the efficiency of this mask, there is salt from Dead Sea which rebalances and revitalizes gently the skin thanks to its unequalled content in minerals salts en trace elements



Oily & Combined Skin —————   
Bag 30g ref. CF 42



# CLUB FACE

## ALGINATE MASKS



### MARINE PEEL-OFF MASKS

New

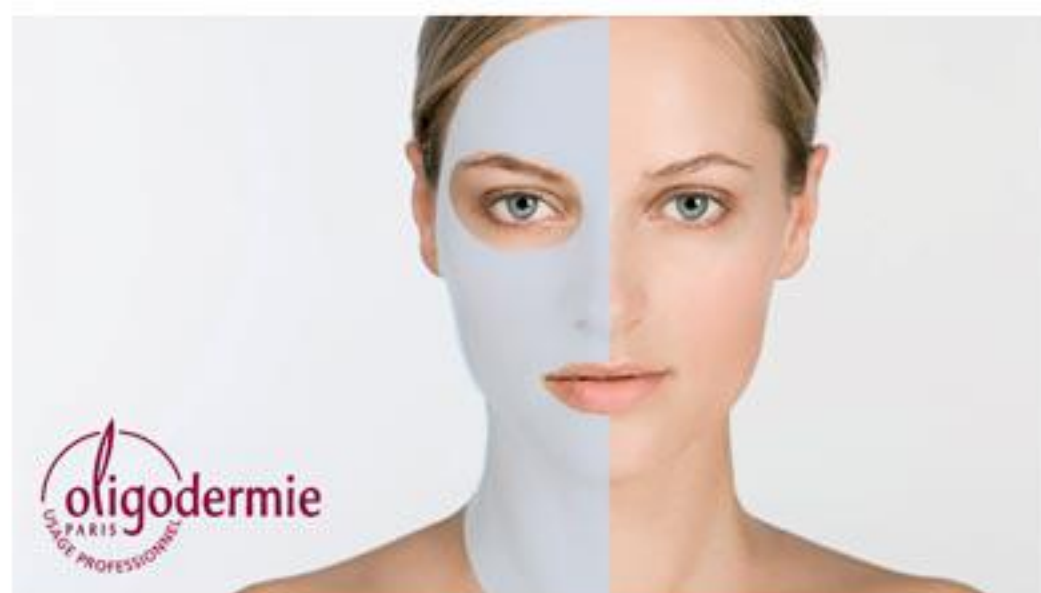


#### SHAKER MASK® WITH HYALURONIC ACID

Intended for dry or dehydrated skins, it gives the skin a soft and velvety aspect.

Hyaluronic Acid: Naturally present in the skin, known to promote water retention in the skin.

Dry Skin —————   
Sachet 25g ref. CF 31



#### PURE ENERGY MASK WITH CAVIAR EXTRACT

Revitalizes and tones. Smooth lines and brightens the complexion.  
• Alginate and Calcium Salt. Allow the mask to rubberize by drying. Provides real osmosis between mask and skin, and allows transfer of a portion of the water contained in the mask to the upper layers of the epidermis.  
• Caviar Extract. Contains energetic substances composed of phospholipids and phosphoproteins, essential components of skin cells.

Bag 30g ref. CF 52

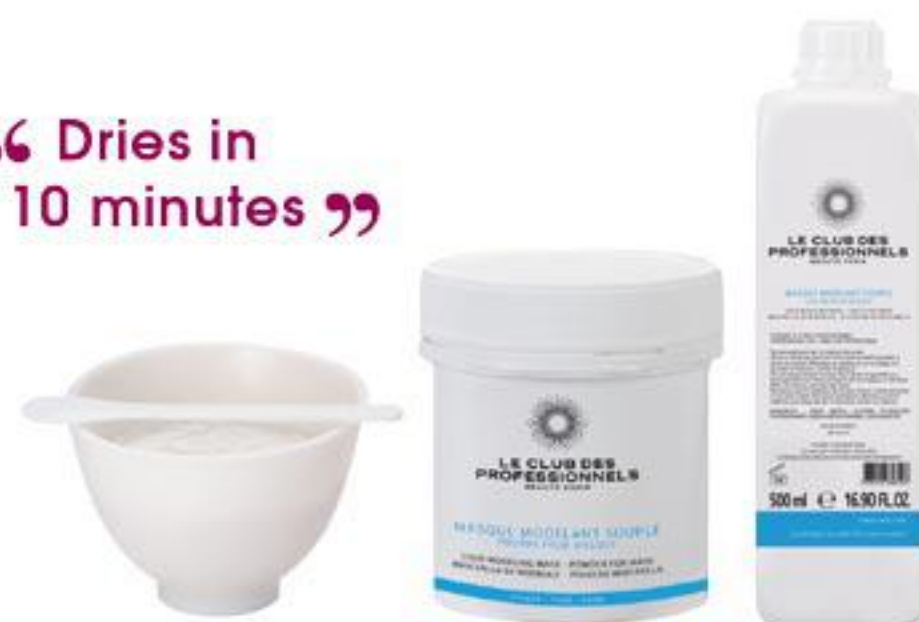


#### GENTLE SOOTHING MASK WITH ALOE

This alginite mask provide to sensitive skins freshness and alleviation. It contains an Aloe Vera extract and essential oil of chamomile flowers which are going to contribute to soften the skin. The presence of olive oil rich in fatty acid unsaturated, in vitamin E and in provitamin A improves the flexibility of the epidermis.

Bag 30g ref. CD 43

“ Dries in  
10 minutes ”



#### COLD MODELING MASK

This mask is an association between a powder and a chemical solution allowing the mask to set. This mixture makes it possible to maintain a strong water concentration in the mask which adheres closely to the skin. These two characteristics will involve osmosis at the epidermic level. The complexion will be luminous and the skin extremely flexible.

All Skin Types, Devitalized & Dry Skin —————   
Powder Jar 150g (10 treatments) ref. PO 10 E  
Liquid Bottle 500ml (10 treatments) ref. PO 11 E

 All skin types  Combined skin  Mature skin  Dry skin  Lightening  Oily skin  Sensitive skin  Devitalized skin

# CLUB FACE

## ALGINATE MASKS

### MARINE PEEL-OFF MASKS

New



#### BIO-CELLULOSE MASK WITH HYALURONIC ACID

The fine structure of the fibers of bio-cellulose mask provides a second skin sensation, which adheres perfectly to the shape of the face. It forms a protective membrane. It softens and restores suppleness to the skin.

**Active Ingredients:**  
Aloe Vera with soothing properties. Hyaluronic acid: naturally present in the skin, known to promote water retention in the skin. Collagen: known to improve skin elasticity.

**Instructions:**  
Avoid the eye area. Successively removing the two protective sheets and take the bio-cellulose. Apply starting from the top of the face and adjust the mask being careful around the eyes and mouth. Leave for about 20 minutes.

All Skin Types —————   
Unit ref. CF 33

### THERMAL MASKS

#### HARDENING THERMAL MOLDING MASKS



#### THERMAL MASK

The particularity of this Mask gives a soft heat which it releases as it become hardens, optimizing the action of the Light Expert Cream Actiwhite® (ref. CF 49.)

Bag 150g ref. CF 36  
Bucket 1.8 Kg ref. CF 61



#### THERMAL MASK WITH ESSENTIAL OIL OF ORANGE

The essential oils of Orange have a revitalizing effect on the epidermis in loss of skin tone due to natural skin ageing or fatigue.

**Applications:**  
For all skin types at the first signs of ageing skin. Pause Time 20 min.

All Skin Types & Devitalized Skin —————   
Bag 150g ref. CF 15

 All skin types  Combined skin  Mature skin  Dry skin  Lightening  Oily skin  Sensitive skin  Devitalized skin



# CLUB FACE

## SHAKER MASK®



### PEEL-OFF MASKS



#### SHAKER MASK® SUBLIM'OR

An ultra-fresh gel texture for a glamorous care, this crystal mask with gold spangles reveals skin brightness. Suitable for all skin types.

**Instructions:**  
Pour 60 ml of water at 20 ° C in the shaker. Add the powder and mix thoroughly. Apply to the face and leave for 10 minutes. Rinse with warm water. Do not apply to the eye contour.

All Skin Types —————   
Bag 15g ref. CF 17



#### SHAKER MASK® LEMON TONIC

A cocktail with lemon for a instant freshness. Aerial and light foam texture. The face regains all its brightness. Lemon peel powder: Absorbent properties. Lemon extract known for its toning properties.

**Instructions:**  
Pour 60 ml of water at 20 ° C in the shaker. Add the powder and mix thoroughly. Apply to face and leave for 10 minutes. Rinse with warm water. Do not apply to the eye contour.

Oily Skin —————   
Bag 15g ref. CF 65



#### SHAKER MASK® CREAMY CHOCOLATE

A melting and creamy texture of chocolate mousse for innovative wellness and relaxing break. Suitable for all skin types.

**Instructions:**  
Pour 60 ml of water at 20 ° C in the shaker. Add the powder and mix thoroughly. Apply to face and leave for 10 minutes. Rinse with warm water. Do not apply to the eye contour.

Devitalized Skin —————   
Bag 15g ref. CF 54











#### SHAKER MASK® ARGAN RHASSOUL

Oriental mask for regenerating and soothing. Your skin regains all its softness. Rhassoul of Morocco is a natural mineral clay for the cleaning and purifying properties. Powder of Argan rich in Vitamin E, and in the astringent properties favor the cell renewal.

**Instructions:**  
pour 100 ml of water in 20°C into the shaker. Add the powder and mix energetically. Apply 3mm of layer and leave it for 10 minutes. Take off the mask and rinse in tepid water.

Oily Skin —————   
Bag 25g ref. CF 16

 All skin types
  Combined skin
  Mature skin
  Dry skin
  Lightening
  Oily skin
  Sensitive skin
  Devitalized skin

# CLUB FACE

## SHAKER MASK®

### PEEL-OFF MASKS



#### SHAKER MASK® WITH CARROT EXTRACT

Intended for dull skin, this carrot treatment restores brightness and smooth the face.

**Active ingredients:**  
Carrot extract: Rich in beta-carotene for an instant healthy glow. Glucose: Known for its capacity to maintain hydration of the upper layers of the epidermis.

Devitalized Skin —————   
Bag 50g ref. CF 57











#### SHAKER

**Instructions:**  
Pour 60 ml of water at 20°C in the shaker. Add the bag of powder and tighten the lid. Shake vigorously until the mixture makes more noise in the shaker (after about 10 seconds). Quickly apply an uniform layer of 3 mm thick making sharp edges. After 10 minutes, take off the mask and rinse with warm water.

**Important:** Avoid eyes and eyebrows.

Unit ref. CA 59

 All skin types
  Combined skin
  Mature skin
  Dry skin
  Lightening
  Oily skin
  Sensitive skin
  Devitalized skin

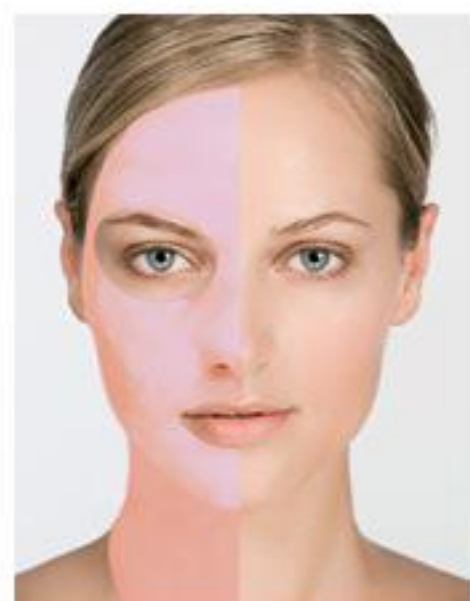


# CLUB FACE

## SHAKER MASK®



A NEW GENERATION OF PEEL-OFF MASKS



### SHAKER MASK® WITH CRANBERRIES EXTRACT

Protect dry and delicate skins. Cranberries extract. Contains omega 3 and 6, essential fatty acids which are nourishing and protector and also tocotrienols which is an anti-free radical.

Perfume: Red fruits note


Dry Skin —————   
Bag 50g ref. CF 55



### SHAKER MASK® WITH KIWI EXTRACT

Revitalize dull and tired skins. Kiwi extract. Contains stimulating Vitamin C and polyphenols with antioxidant properties.

Perfume: Fruity and acidulated note.

Devitalized Skin —————   
Bag 50g ref. CF 56



### SHAKER MASK® WITH CUCUMBER EXTRACT

Naturally refresh the complexion for normal and combined skins. Cucumber extract. Astringent (sulfur) and remineralizing (potassium, phosphorus, magnesium) properties.

Perfume: Cucumber note, slightly marine.

Oily Skin —————   
Bag 50g ref. CF 53



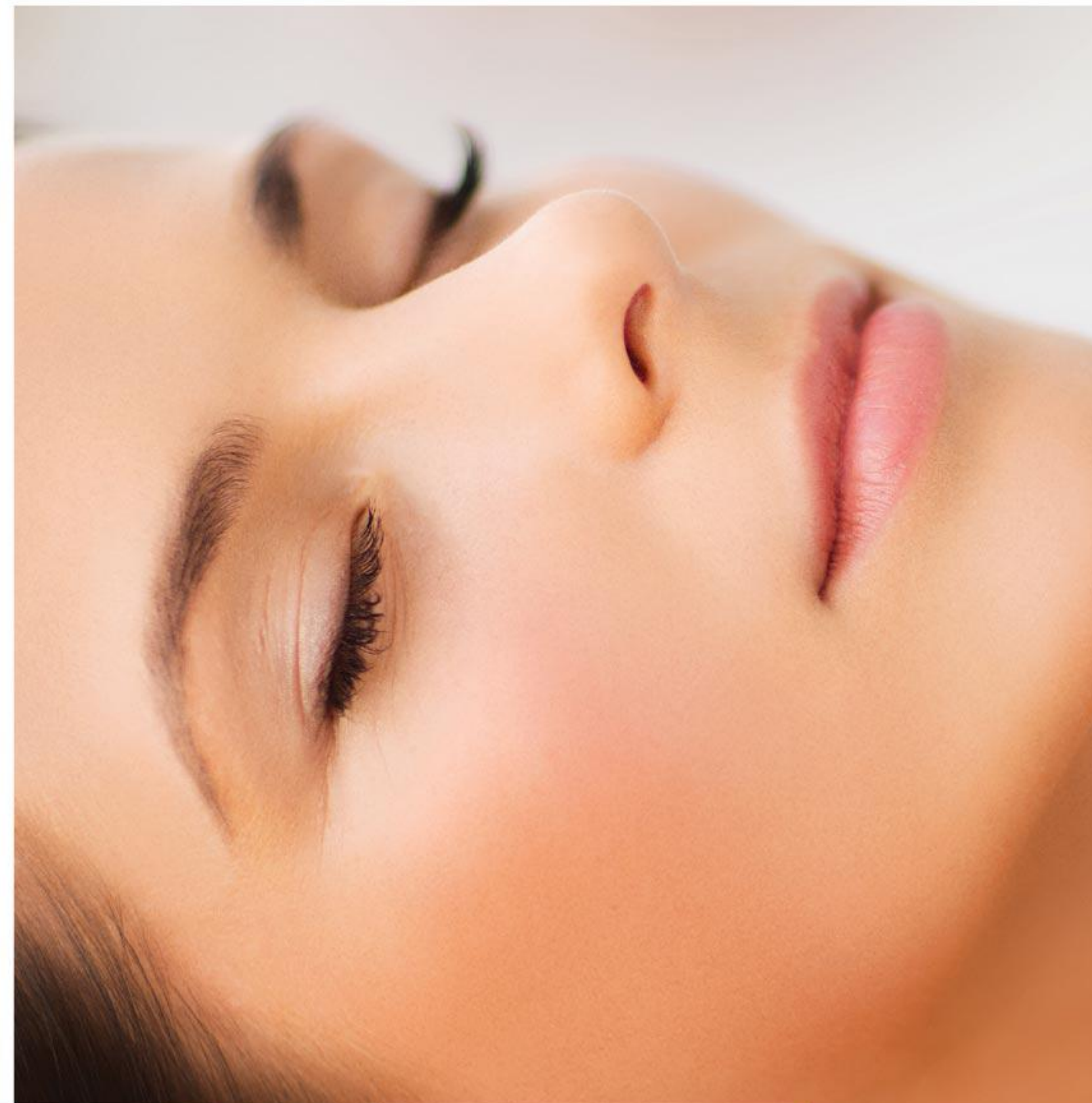
### SHAKER MASK® POLLUTION CONTROL

Grey powder for peel off mask. Revitalize, tones up. Smooths lines and brightens the complexion.

Active ingredients, their actions:  
Alginate & Salt of Calcium. Allow a real osmosis mask/skin. Plants Activated. Cleanse naturally, thanks to its power of adsorption, by retaining impurities and toxins. • Vegetal Anti-pollution Complex. Contain extracts of Ivy and Sunflower associated with Phytic Acid derived from Rice Bran. Protects the skin cells against various types of atmospheric pollution. Fragrance free. • Preservative free.

Bag 25g ref. CF 51

• All skin types • Combined skin • Mature skin • Dry skin • Lightening • Oily skin • Sensitive skin • Devitalized skin



CLUB VISAGE

• EYE CARE



# CLUB FACE

## EYE CARE



### ANTI-AGEING EYE CONTOUR



“ a decongestant and soothing effect ”



#### PEEL OFF MASK EYE CONTOUR

This modeling care of the eye contour combines the algae brown and the rice extract for a decongesting and soothing effect. The Marine Collagen extract regenerates and regulates the elasticity of the epidermis. Rose's essential oil, in the toning properties, stimulates the cell renewal of the epidermis and hydrate\* the eye contour.

\*upper layers of the epidermis.

Bag 10g

ref. CF 39

“ Creamgel texture very soft and melting ”



#### EYE CONTOUR BALM

Gel-cream texture very soft and silky for this new formula without parabens. It contains Argan Oil and Shea Butter to soften and nourish the particularly sensitive area around the eyes. These two assets rich in plant sterols and vitamin E are known for their antioxidant properties. The Eye Contour Balm contains green tea extract with an anti-oxidant and also play a protective role towards external aggressions. About Hamamelis extract, it provides a sense of wellbeing through its calming properties. In addition, a tensor-based extract of natural sugars from oats visually softens crow's feet. Signs of fatigue fade and the eyes are brighter, more rested. The Eye Contour Balm apply morning and / or evening with light smoothing movements made from the inner edge to the outer edge of each eyes.

Tube 100ml

ref. PO 19



#### REFRESHING EYE CONTOUR MASK

2 bag nonwoven pre-cut form "Tulip" impregnated with serum and ready to be used.

**Beauty results:** Provides softness, suppleness, comfort and freshness to the delicate skin around the eye.

**Instructions:** Separate the two nonwovens. Take one of its narrowest part and apply it to the outer corner of the eye (crow's feet). Separate the two "petals" of the tulip to position one on the upper lid and the other one on the lower eyelid. Smooth well to remove any air bubbles. Do the same for the other eye. After 20-30 minutes of pause, remove them. Do not rinse.

\*of the upper layers of the epidermis.

Bag 10g

ref. CF 25



CLUB VISAGE

• SKIN CARE CREAMS



# CLUB FACE

## SKIN CARE CREAMS



### SPECIAL FORMULAS

#### SKIN CARE CREAM WITH KIWI EXTRACT



This cream with Kiwi extract is for dehydrated, dull and mature skin types in need of brightening. Rich in Vitamin C, The kiwi is giving, in addition, the benefits of trace elements and amino acids from the fruit. The skin will look more velvety, supple and «plumped out». used after cleansing and toning, it leaves the skin feeling fresh and hydrated.


Devitalized and Dry Skin —————   
Jar 250ml ref. CC 06

#### SKIN CARE CREAM WITH COLLAGEN & ELASTIN



This treatment is dedicated to all women who want a moisturizing daily cream that minimizes the appearance of wrinkles. Thanks to its composition of collagen and elastin, this treatment will bring hydration, firmness and suppleness to your skin.

Apply to the face and neck at the end of the care treatment.

Normal and Combined Skin —————   
Jar 250ml ref. CC 09

#### NUTRI VITALIZING EMULSION



This soft and comfortable day cream protects dry skin while visibly reducing fine lines and wrinkles. It contains 2 complementary vegetal oil:

- The Babassu oil, for the antioxidant properties.
- The Grapeseed oil, softens.
- The Algae-Repair® stimulates the natural defenses of the skin and activates the synthesis of collagen and Elastin.
- The active ingredient derived from Artemia Salina (plankton) provide some energy and protects the cutaneous cells.

Tube 100ml ref. CD 35

#### SKIN CARE CREAM WITH CALENDULA EXTRACT



Softens, protects and soothes sensitive and delicate skin. To be applied at the end of the care treatment by light movements on the face and neck.

Sensitive Skin —————   
Jar 250ml ref. CC 08



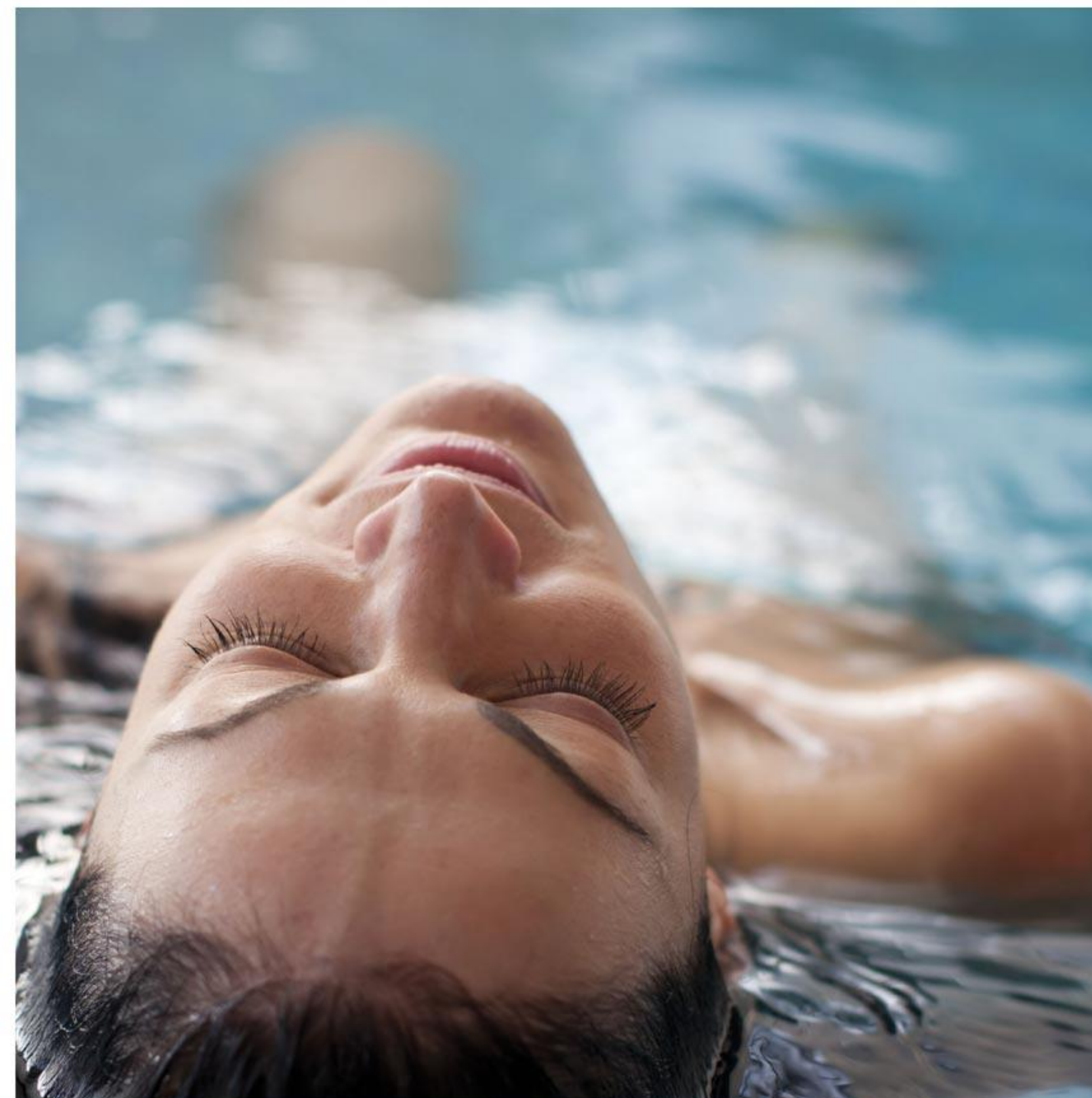
#### LIGHT EXPERT CREAM WITH ACTIWHITE®

It gives a new brightness to the complexion. For all skin types presenting dark spots. Active ingredients, their actions:

- Actiwhite®. Lightening ingredient from latest generation, inhibits tyrosinase synthesis, limiting melanin production.
- Well balanced in peptides, amino-acids and mineral salts, Phyltherm® Vegetal C<sup>2</sup> boosts oxygen consumption
- Hyaluronic Acid as well as Trehalose from vegetal origin and Glycerin contribute to a balanced hydration\* rate of the skin.
- Perfume : slightly fruity and flowered.

Jar 250ml ref. CF 49

 All skin types  Combined skin  Mature skin  Dry skin  Lightening  Oily skin  Sensitive skin  Devitalized skin



**oligospa**  
PROMAT'S  
**BODY**

- LONG JING
- SENCHA
- AMAZONIE
- LEVANT
- BORA-BORA
- PONDICHERY
- EXTRÊME ARCTIQUE





## SUR LA ROUTE DU LONG JING

### RUBBERIZING BODY WRAPPING WITH GREEN TEA

Green Powder for rubberizing body mask.

**Beauty results:**  
Refines, tones. Smooth and softens the skin.

**Active Ingredients, their actions:**

- The alginate and calcium salt allow the formation of an occlusive plastic film optimizing the action of different active ingredients.
- Green tea (which contains caffeine and Theine) and the brown algae Laminaria (which contains iodine) provide lipolytic actions which promote weight loss
- The presence of clay purifies the skin
- Proteins of Wheat germ smooth and nourish the skin
- Perfume: fresh note of Green Tea.

Quantity per treatment: 150 g.



Bucket 2kg (approx. 13 cares)  
Bag 150g

ref. **CM 48**  
ref. **CM 69**

“ tones, smoothes  
and softens the skin ”

### BEAUTY BODY LOTION

It helps to compensate skin dryness and insures perfect hydrating\*. The association of moisturizing\* and regenerating ingredients, with the energizing and firming minerals of the seaweed, gives the skin back its suppleness and elasticity.

**Ingredients:**

Algae of Laminaria Extracts, Shea butter, Vitamin E, Minerals and marine Trace elements, including Sodium, Potassium and Magnesium.

\*of the upper layers of the epidermis



1L (approx. 50 cares)

ref. **CM 44**



## SUR LA ROUTE DU SENCHA

### BODY SCRUBBING GEL WITH 3 TEA EXTRACTS

This gel contains an Extract of 3 China teas (White, green and Black) rich in various antioxidant tannins which work together and contribute to fight against the ageing of the skin. The sea-salt crystals, with their gentle and at the same time energetic effect, help the cell renewal. The gel texture is concentrated in polysaccharides of seaweeds with moisturizing properties. The note of perfume of green Tea in citrus fruits procures a pleasant sensation of freshness.

\*of the upper layers of the epidermis

Jar 500ml (approx. 12/15 cares)

ref. **CM 52**



“ Fight against  
sagging skin ”



### ALGOSERUM WITH GREEN TEA

The Green Tea contains Caffeine, Theophylline and Theobromine which are known for their slimming action.

The Algoserum contains also two extracts of brown algae: the first one, Undaria Pinnatifida known under the name of Wakame and native of Japan, contains fucanes which stimulate the microcirculation of the skin; the second, Laminaria Digitata is rich in iodine which contributes to the slimming process.

The note of perfume green Tea in citrus fruits procures a pleasant sensation of freshness.

500ml (approx. 15/20 cares)

ref. **CM 53**



### BODY WRAPPING WITH 3 TEA EXTRACTS

This powdered body wrapping contains a 3 Tea extracts (White, Green and Black) from China rich in various antioxidant tannins which work together and contribute to fight against the ageing of the skin. Oligosource, a marine active ingredient taken from the red algae Chondrus Crispus, contains polysaccharides (approximately 70 %) and oligosaccharides (approximately 30 %). It has a dual function of moisturising and soothing. Polysaccharides form a film on the surface of the skin to slow down the water loss and oligosaccharides soften the skin. The perfumed note green Tea in citrus fruits procures a pleasant sensation of freshness.

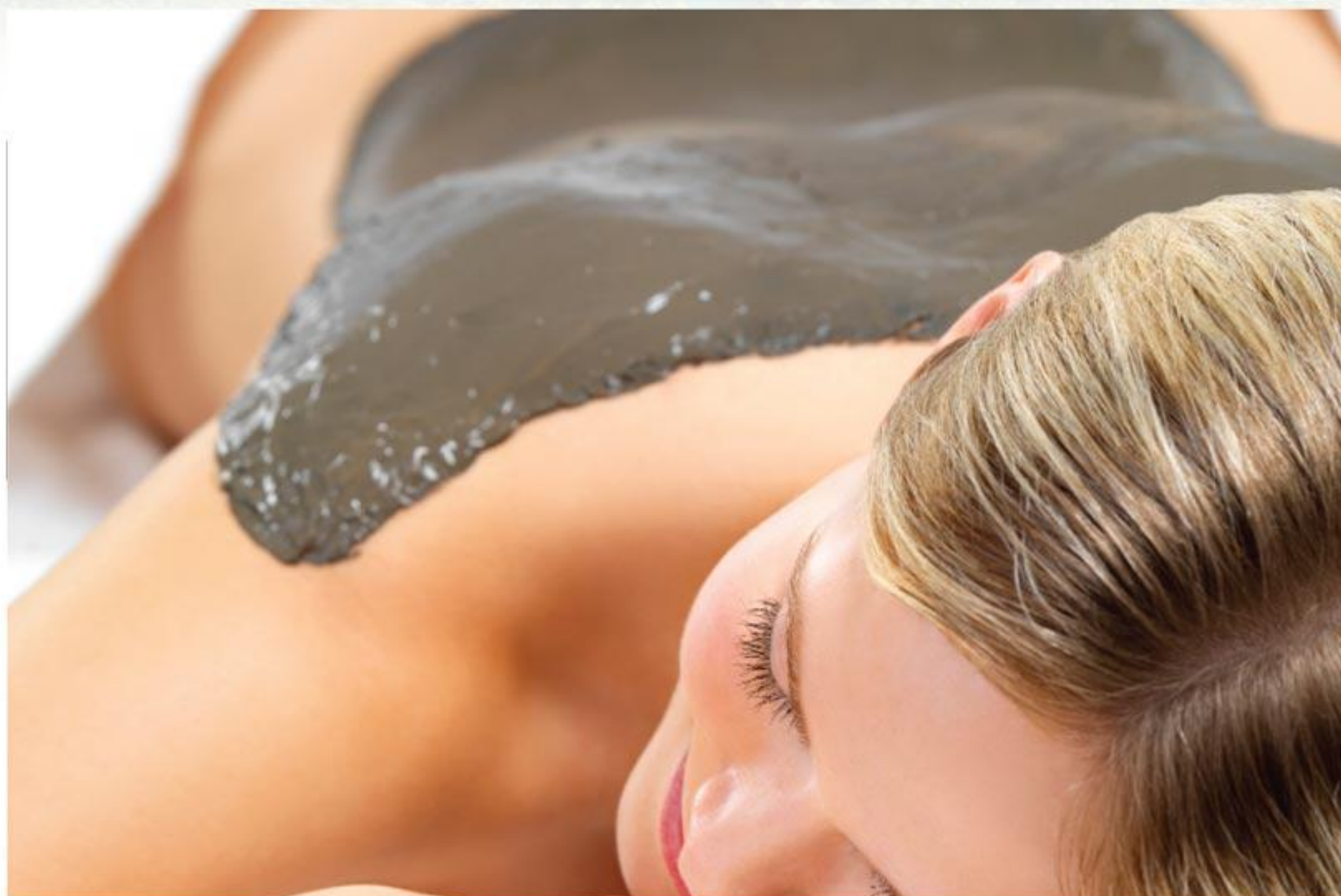
Bucket 3kg (approx. 20 cares)

ref. **CM 54**





## SUR LA ROUTE DE L'AMAZONIE



### SELF-WARMING BODY MASK ORANGE PEEL SMOOTHING EFFECT

Grey paste ready for use.

**Beauty results:**  
Smooth cellulite and firm the skin.

**Active ingredients, their actions:**

- Active ingredient of lipolytic (extracted from Guarana, Laminaria and Fucus). Contribute to the reduction of cellulite.
- Heating Agent of vegetal origin. Procure a soft sensation of relaxing heat under the effect of the modelage and help to maintain the cutaneous hydration
- Perfumed notes of fruity Grapefruit.

Bucket 1L (approx. 10 cares)

ref. CM 13



## SUR LA ROUTE DU LEVANT

### BODY WRAPPING WITH RICE POWDER

**Beauty results:**  
Give a satin feeling. Revitalizes and nourishes the skin.

**Active ingredients, their actions:**

- Rice powder micronized. Rich in starch with the virtues of moisturizing and matifying.
- Bran Rice. Proteins source of nourishing and revitalizing
- 7 Alpine flowers extracts known for their brightening properties Mauve (Mallow), Peppermint, Primrose, , Alchemilla, Veronica and Melissa)
- Perfumed note: White flowers and a hint of vanilla.



Bucket 2kg (approx. 8 cares)

ref. CM 75

“ Discover this treatment inspired by  
beauty rituals Japanese ”

### RICE GRANITE FOR BODY EXFOLIATION

An original texture of coated particles rice which, in the contact of the water, release on the skin a light and milky foam and delicately perfumed. Beige granular powder to be mixed with water to obtain a ready for use paste for exfoliation.

**Beauty results:**  
Smooths and softens the skin. It evens and restores brightness.

**Active Ingredients, their actions**

- Mixture of 3 kind of rice particles powders: natural exfoliating.
- Bran Rice Oil. There are many mineral salts, enzymes and vitamins which contain Orizanol, a powerful antioxidant helping the protection of the skin.
- 7 alpine flowers extracts known for their brightening virtues Mauve (Mallow, Peppermint, Primrose, Alchemilla, Veronica and Melissa).
- Perfumed note: white flowers, slightly vanilla.



Jar 240g (approx. 8 cares)

ref. CM 74





## BODY WRAPPING WITH COTTON EXTRACT

This powder wrapping contains Cotton extract from India with moisturizing properties\* as well as the Aloe Vera Extract in the soothing virtues.

Oligosource, a marine active ingredient taken from the red algae Chondrus Crispus, contains polysaccharides 70% and oligosaccharides 30%.

It has a dual function of moisturizing\* and soothing. The polysaccharides form a film on the surface of the skin to slow down the water loss and the oligosaccharides soften the skin.

Its subtle Jasmine perfume is an invitation to relaxation.

\*of the upper layers of the epidermis

Bucket 3kg (approx. 20 cares)  
Bag 125g

ref. **CM 50**  
ref. **CM 67**

“ Ideal treatment to  
repair and nourish  
dry or damaged skin ”

## SUGAR SCRUB FOR BODY

With a gently body scrub brown sugar from the West Indies and Sweet Almond Oil, along with a subtle vanilla perfume.

Bucket 1kg (approx. 15 cares)

ref. **CD 11**



## ICY MOUSSE FACE & BODY

Beauty results:  
The skin is revitalized, fresh and very soft, comfortable and soothed.

Active Ingredients, their actions:

- Seabuckthorn Oil (Hippophaë Rhamnoides) rich in Vitamin E, carotenoids (provitamin A), and phytosterols. Protects, softens and revitalizes
- Brown Algae Extract, Durvillea Antarctica concentrated in Alginate Acid (anti-radical) and specific sugars (resistance to cold). Protect the skin from external aggressions, including effects of pollution.



Jar 60g (approx. 20/60 cares)

ref. **CF 58**





SUR LA ROUTE DE BORA BORA



This treatment combines the finest marine and botanical ingredients for an intense relaxation and hydration\*. The Island perfume (Vanilla, Coconut, and Cinnamon) and the melting textures bring the skin the sensation of softness, sweetness and well-being.

The dry skins will be nourished in-depth.

## MASSAGE WAX

The Walnut oil of Brazil is an oil rich in linoleic acid, essential fatty acids and phytosterols which stimulate the blood circulation. Spirulina, a blue algae, naturally rich in pro-vitamin A, in protein, which nourishes the skin.

The Red Algae contains Vitamin C which helps cell nutrition. This Massage Wax is also enriched in Vitamin E, powerful antioxidant and in Vitamin F in the function as a protective barrier.

Its sweetened note in the fruits exotic aromas leaves a delicious imprint on the skin.

Jar 500ml (approx. 20/25 cares)

ref. CM 59

.....  
All skin types Combined skin Mature skin Dry skin Lightening Oily skin Sensitive skin Devitalized skin



CLUB BODY

- SCRUB
- MODELING
- THINNING
- REMODELING



# CLUB BODY

## EXFOLIATION & MASSAGE



### SLIMMING WITH ALGAE



#### BEAUTY BODY OIL

This Beauty Oil is especially designed as an excellent lubricant allowing an easy and prolonged body massage. It can be used alone, or mixed with the essential oils according to treatment required: Purifying, Toning, Relaxing or Slimming.

Bottle 1L

ref. CM 36



#### CRYO-ACTIVE BODY SHAPING MASK

Green paste ready for use. Lightens and refines the legs. Smooth and softens the skin.

##### Active ingredients, their actions:

- Menthol and alcohol. Provide an intense freshness for a draining effect.
- Green Clay. Regulates energy areas affected by discomfort.

##### Instructions for use:

Apply a thick layer from the ankles to the top of the thighs. Do not apply on the stomach. Fold the wrapping sheet around the body and leave for 10 minutes. Rinse the mask in the shower.

##### Important:

Due to the intense cooling effect generated by the mask, do not leave the client alone during the time of care. Quantity per treatment: 250 g.

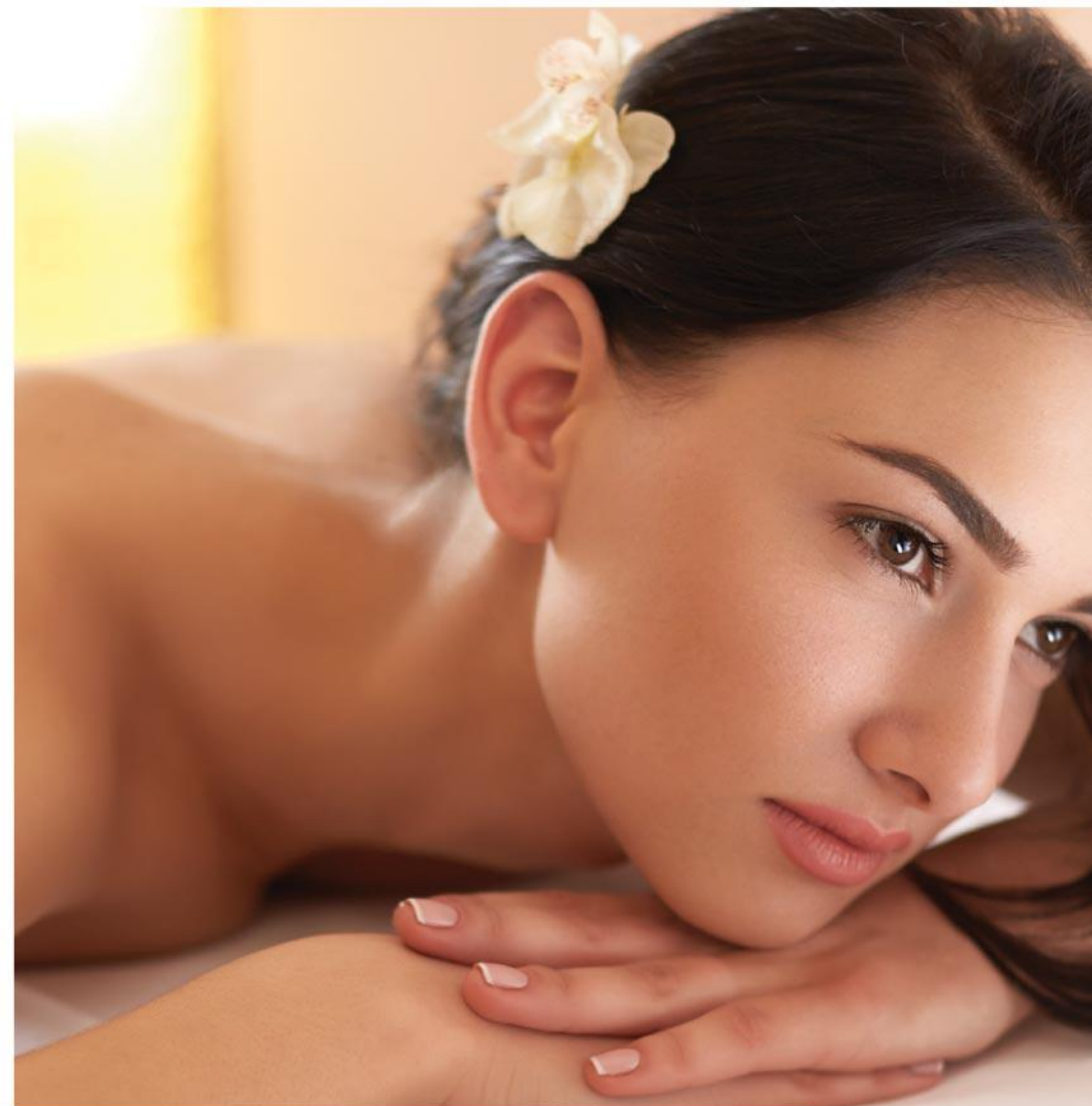
##### Recommendation:

This product is not recommended for pregnant women.

Bucket 2kg

ref. CM 16

• All skin types
• Combined skin
• Mature skin
• Dry skin
• Lightening
• Oily skin
• Sensitive skin
• Devitalized skin



oligodermie  
PARIS  
RETAIL

- CLEANSERS
- TONICS
- SCRUBS
- MASKS
- SERUMS
- SKINCARE CREAMS
- EYE CARE





### FOAMING CLEANSER

The fluid gel turns into a fine and light foam. Removes make up, and easily cleanses oily skin. Coprah oil respects irritated skins.

Oily Skin —————  
Bottle 200ml ref. PC 01

“ New formula ”



### CREAMY CLEANSING MILK

Enriched with Sweet Almond and Allantoin having softening properties. This cleansing milk maintains the flexibility of the epidermis. An extract of Laminaria Algae keeps skin vitality.

All Skin Types and Dry Skin —————  
Bottle 200ml ref. PE 02

“ New formula ”



### GENTLE PAMPERING LOTION

This alcohol-free lotion soothes and brings comfort to the skin. It contains a soothing active ingredient of marine and plant origin as well as a relaxing complex based upon Blue Lotus, White Lotus and Magnesium Salt. In addition, some glycerin of vegetal origin provides its hydrating properties.

All Skin Types and Dry Skin —————  
Bottle 200ml ref. PD 19

“ Refreshing ”



### FRESH PURIFYING LOTION

This alcohol-free lotion completes cleansing process and purifies oily skins while refreshing it. Made from an extract of the bark of Enantia Chlorantha, African Tree, The Astringent Virtues, Moisturizing agent and seaweed extract of Mastocarpus algae complete the effect of this treatment through their action on transepidermal water loss.

Oily and Combined Skin —————  
Bottle 200ml ref. PD 16

## MAKE UP REMOVAL



### GENTLE SCRUB CREAM

Removes dead cells from the surface of the skin and give softness and transparency.

All Skin Types and Dry Skin —————  
Tube 50ml ref. PA 09

“ Softness ”



### VITAMIN SCRUB GEL KIWI & MANGO

This complete treatment removes dead cells, favoring cell renewal. Apply the scrubbing gel once or twice a week on whole face and neck, by avoiding the eye area. Gently massage in circular motions

All Skin Types —————  
Tube 50ml ref. PD 09

“ New ”



### GENTLE EYE MAKE-UP REMOVAL

This bi-phased eye makeup remover with peach extract removes all makeup even intense while respecting the delicate eye contour area.

It contains several active: Peach Extract, rich in Vitamin B, C and E known for its soothing and revitalizing properties. The Cornflower Floral Water, soothing and regenerating.

All Skin Types and Dry Skin —————  
Bottle 100ml ref. PA 04



### GEL MASK WITH HYALURONIC ACID

Real cure of freshness, this pink and translucent gel contains Hyaluronic Acid, Glycerin plant and panthenol (Provitamin B5) known for their ability to mobilize water in the epidermis and slow its evaporation\*.

\*of the upper layers of the epidermis

All Skin Types —————  
Tube 50ml ref. PE 08

“ Real Cure of freshness ”



### DOUBLE POWER RADIANCE MASK

This innovative gel mask has a truly dual action, both scrub and mask for an immediate softness and glow. With this new generation of lightening ingredient, the Actiwhite inhibits the synthesis of tyrosinase, restricting the production of melanin.

A derivative of stabilized Vitamin C boosts this mechanism of reduction. The Hyaluronic Acid and Glycerin, promote the water balance of the skin. The dead skin cells are removed by enzymatic and mechanical actions, which is a combination of Keratolin and Glycolic Acid. Suitable for all skin types, except irritated and sensitive skin.

All Skin Types —————  
tube 100ml ref. PG 10

“ Contains Actiwhite ”



### PURIFYING MASK WITH 3 CLAYS

From a soft and comfortable texture, this mask combines 3 clays (green, white and red) to cleanse and soften. It restores radiance to oily and combination skin. The green clay absorbs excess sebum and other impurities. The white clay, very soft, is rich in silica with remineralizing properties. The red clay is known to revive dull complexions. The Aloe Vera and Glycerin from vegetal origin with moisturizing\* properties complete the rebalance action of this treatment.

\*of the upper layers of the epidermis

Oily Skin —————  
Tube 50ml ref. PC 04

“ A soft & Comfortable texture ”



### NUTRI-RELAXING MASK

The creamy texture of this mask envelops the face in a soft cocoon for relaxation. The Calmosensine® soothes and relaxes the skin by stimulating the synthesis of endorphins, messengers of comfort and well-being. The Babassu oil and the Phytosqualane together nourish and soften the skin while the algae-repair® boots some of its natural defense mechanisms.

Suitable for mature and dry skins.

Dry Skin —————  
tube 50ml ref. PD 37

“ Contains Actiwhite ”





### LIGHTENING SERUM

With its texture fresh and soft, it will clarify and unify your complexion. Not greasy or sticky, it will help to treat the dark spots. With this new generation of lightening ingredient, the Actiwhite inhibits the synthesis of tyrosinase, restricting the production of melanin. A derivative of stabilized Vitamin C boosts this mechanism of reduction. The Hyaluronic Acid and Glycerin, promote the water balance of the skin\*.

\*of the upper layers of the epidermis

All Skin Types —————   
Bottle 30ml ref. **PG 07**



### PRECIOUS ELIXIR GOLD & CAVIAR EXTRACT

Nourishing and protective care which contains:

- Argan oil which nourish and regenerates the dry and mature skins.
- Caviar extract from Caviar made of amino acids, mineral salts and vitamins (A and D) which contribute to activate the cellular metabolism of tired skins.
- Gold Particles which illuminate the complexion and unify visually the skin texture.

Dry and Mature Skin —————    
Bottle 30ml ref. **PD 21**



### LIFT MINUTE SERUM

The serum with immediate Lift'up effect is due to the concentration in active tensors of marine and vegetal origin. The skin is extremely smooth and soft.

The Algae Repair® associate 2 extract of seaweeds :

- The red seaweed contains sugars anti-stress which stimulate the natural defenses of the skin.
- The blue micro-seaweed Spiruline contains restorative peptides which redensify the skin. The Spring Water of marine origin, naturally rich in trace elements Manganese and Silicon.

All Skin Types —————   
Bottle 30ml ref. **PD 11**



“ New ”

### ANTI-WRINKLES EXPERT SERUM

Ultra concentrated serum that effectively acts on wrinkles even deeper. The skin is redensified and bright. The signs of ageing become blurred and the natural defenses of the skin are strengthened.

The main active ingredients: Algae Repair (5%): Marine Complex red and blue algae. It stimulates the synthesis of collagen and elastin proteins and contains restructuring wrinkles and increases the life cycle of epidermal cells.

By avoiding the eye contour, apply the Serum morning and evening under the day or night cream. Be sure to make it penetrate well.

Mature Skin —————   
Bottle 30ml ref. **PD 39**



### PAMPERING SERUM

This pale pink serum calms sensitive skins and make it feel really soft.

It contains:

- Dermocalmine® (5%) which alleviates widespread red patches.
- Mallow extract, known for its mucilage content in the soothing and calming properties.

All Skin Types —————   
Bottle 30ml ref. **PE 07**



“ New ”

### BLEMISH SERUM

This blue serum contains 5% Glycolic Acid. It clarifies the complexion of the skin by removing dead skin cells.

This exfoliation accelerates cell renewal, and helps to clean the pores and imperfections. While avoiding the immediate eye area, apply the serum in the morning while taking care to make it penetrate and let it dry beforehand.

To be used only on very oily skin.

Oily Skin —————   
Bottle 30ml ref. **PC 09**



“ New Formula ”

### HYDRA SERUM

Serum acting on 2 regulation mechanisms of skin hydration

It contains:

- Wild pansies extract (4 %): increase the synthesis of Hyaluronic acid, which facilitate the epidermal water retention and stimulates the synthesis of aquaporins-3 which activate the process circulation of water in the skin
- Peptides of Rice (4 %): revitalize the cellular metabolism, tone and smooth the skin.

Devitalized Skin —————   
Bottle 30ml ref. **PD 36**





### YOUTHFULNESS CREAM WITH STEM CELLS

This Cream with Stem cells, coming from marine biotechnology, acts at any age on the Capital Youth of your skin. The stem cells of Eryngium Maritimum stimulate the renewal of keratinocytes, the main cells of the epidermis, and regulate the process of division within its different layers. They have impact on the irritating stress induced by UVB rays and free radicals. The complex Mimosa wax, Jojoba and Sunflower associated to the Phytosqualane possess nutritional and moisturizing properties.

ANTI-AGEING CARE (30 YEARS UP)

Jar 50ml

ref. PD 38

3%  
of Coenzyme  
Q10

### Q10 BOOSTER DAY CREAM

Prevention cream anti-aging. Light and melting, concentrated in coenzyme Q10, it brings some energy and stimulates the skin. Coenzyme Q10 3%: Active ingredient anti-radical, which act in synergy with the vitamin E to confer on this cream a powerful antioxidant power. Avocado oil 1%: nourishing properties

ANTI-AGEING PREVENTION

Jar 50ml

ref. PD 40



### INTENSIVE CARE WITH LIPOSOMES

Liposomes convey an elaborate active ingredient from Proteins of Soya which stimulates the cell renewal. Some vegetal oils of Borage rich in essential fatty acid comes to complete this action by acting on the suppleness of the skin by preventing lines and wrinkles. Suitable for all skin types.

ANTI-AGEING CARE (30 YEARS UP)

Jar 50ml

ref. PD 17

### RESTORATIVE CREAM

The Restorative cream restores your skin the plenitude of a youth marked with strength and firmness. The collagen, the fibronectin and the Acid hyaluronic play a fundamental role in the cohesion of the support fabric of the skin. Immediate comfort and brightness are given by 3 % of vegetal oil intensively nourished associated to 6 % of complex hydration\*.

INTENSIVE ANTI-AGEING CARE (45 YEARS UP)

Jar 50ml

ref. PD 33



### LIGHT EXPERT CREAM WITH ACTIWHITE®

Give a new brightness to the complexion. For all skin types and complexions presenting dark spots.

- Actiwhite®, Lightening active ingredient of last generation. Inhibit the synthesis of the tyrosinase and restricting the production of melanin.
- Phyltherm® Vegetal C2, content balanced in peptides, essential amino acids and mineral salts. Boost the oxygen consumption in epidermal cells, increases their energetic potential and stimulates their cells renewal.
- Hyaluronic Acid, Tréhalose from vegetal origin and Glycerin: contribute to a balanced hydric of the skin.

ACTIWHITE® LIGHTENING CREAM

Jar 50ml

ref. PG 08

### ACTIVE DAY CREAM SPF 25

Its light and melting formula is an excellent day cream which contains a lightening active ingredient of last generation, the Actiwhite®, which inhibits the synthesis of the tyrosinase, restricting the production of melanin. A derivative of stabilized Vitamin C, boost the diminution of this mechanism.

The SPF25 protects the skin from UVB. Acetate of Tocophérol (derivative of Vitamin E) and antioxidant, play a role in the protection against the free radicals by the sun rays. Beeswax, Film-forming and moisturizing\* agents, which the Tréhalose from plant and the Hyaluronic Acid, promote hydric balance of the skin.

ACTIWHITE® LIGHTENING CREAM

Airless Pump 50ml

ref. PG 09



### NUTRI VITALIZING EMULSION

The day care protects dry skins while visibly reducing fine lines and wrinkles.

It contains 2 complementary vegetal oils:

- The Grape seed oil softens. Rich in linoleic acid, it promotes good cohesion of epidermal cells.
- The Babassu oil very fluid and penetrating, contain plant sterols and the Vitamin E known for their antioxidant properties.
- Algae-Repair® stimulates the natural defenses of the skin and activates the synthesis of collagen and Elastin.
- The active ingredient derived of Artemia Salina (plankton) provides some energy and protects the skin cells.



Dry Skin

Airless Pump 50ml

ref. PD 14

### HIGH TOLERANCE CREAM

Specially formulated for sensitive skins. The High Tolerance cream contains a soothing active ingredients of marine and plant origin which allows to restore to the skin an optimal comfort and protection. A relaxant agent pampers the skin by increasing the production of endorphins. 15 % of moisturizing agent\* as well as Shea butter make this to a strong nourishing cream that protects the sensitive skin of tightness that feels on a daily basis. An extract of Laminaria seaweed remineralize the epidermis by providing minerals and essential trace elements to its balance.\* of the upper layers of the epidermis



Sensitive Skin

Airless Pump 50ml

ref. PF 04

### PURIFYING CREAM

New formula with parabens free. This light and fluid cream is made for combination and oily skin. In order to reduce the secretion of sebum and the glow of the skin, an active ingredient elaborated from the bark of Enantia Chlorantha Extract (African tree) decreases the size of pores, whereas an extract of Witch Hazel in the astringent properties contributes to tighten them for a skin texture more refined. As a supplement to these 2 extracts and for an immediate visible effect, a matifying powders allows to absorb excess of sebum. The purifying cream rebalances smoothly the epidermis, restores in the skin a matt aspect and embellishes the complexion.



Oily Skin

Airless Pump 50ml

ref. PC 05

### LIFT SERUM BUST & NECK

This fresh gel acts as a tensor to embellish the bust and fight the misdeeds of time. Vegetal proteins associated with a rich active ingredient in polysaccharides and acacia gum lift immediately the skin of the décolleté and improve its strength. In order to fight against the skin slackening.

its formula contains:

peptides of blue micro-seaweeds, rich in restructuring proteins. Rapidly, the décolleté is lifted and the bust is firmed up. This product is not advised to the women who breast-feed.

Test of efficiency:

tensor effect measured to 86 % of the volunteers 5 minutes after application\*. 96 % of the volunteers found the skin firmer \*\*. 91 % of the volunteers found the skin lifted \*\*.

\*Clinical tests realized on 22 women.

\*\* Test of self-assessment realized by 22 women after 28 days.



BODY CARE - EFFECTIVENESS CLINICALLY TESTED

Bottle 50ml

ref. CM 77

New





## VITAMIN C DAY CREAM

Concentrated in Vitamin C, this cream brings to your face vitality and brightness.

### Active ingredients:

Derivative of vitamin C 2%: known for these anti-free radical properties. It protects the skin. Promotes the forming of collagen.

Orange extract 2%: pure water plant providing essential nutrients to the skin (trace elements and minerals).

Jajoba oil 1%: emollient, softens the skin.

Apricot oil kernels 1%: very rich in saturated fatty acids and in Vitamins A and E.

Nourishing, it softens and revitalizes the skin.

Devitalized Skin —————   
Airless Pump 50ml ref. PD 02



## PURE RETINOL NIGHT CREAM

Night cream with pure retinol, combined with vitamin E and with an active of Beech buds, it offers comfort and youth to the skin.

The active in the retinol encapsulated 1%: vitamin A, it boosts the dynamics of skin cells by stimulating the proteins synthesis.

Tocopherol Acetate: vitamin E, antioxidant

Shea butter: rich in Vitamin E, Nourishing properties.

Beech buds extract: natural active which provides an effective global response to the skin aging.

Devitalized Skin —————   
Airless Pump 50ml ref. PD 03

“ Cream gel which contains  
4 major active ingredients. ”

FROM 45 YEARS UP

“ Eyes look  
brighter and refreshed ”

FROM 30 YEARS UP



## EYE CARE CONCENTRATE

The Eye Care Concentrate is a gel cream which contains 4 major active ingredients.

Matrixyl 3000 @ (3 %) and the organic

Silicon (4 %) help to stimulate the synthesis of the collagen, the elastin, the fibronectin and some hyaluronic acid who ensure the proper cohesion of the connective tissue of the skin particularly fine around the eye.

Eyeliss @ (3 %) help the reduction of the puffiness.

The Bi-complex concealer (2 %) plays activator's role in the elimination of pigments responsible for the color of dark circle. Your look finds all the expression, the freshness and the vitality of the youth.

Airless Pump 15ml ref. PD 35



## EYE CONTOUR BALM

A look more bright and more rested with this balm.

### Contains:

- Argan oil and Shea butter: soften and nourish the sensitive area of the eye contour. Rich in sterols and Vitamin E well known for their antioxidant effect.
- Green Tea extract: antioxidant and protector of pollution.
- Witch Hazel extract: sensation of well-being thanks to its soothing properties.

Tensor extract made of natural oat sugars: softens visually crows' feet.

Airless Pump 30ml ref. PB 06