

**AROSHA**  
AESTHETIC SCIENCE



OUR **MATRIXTECH BIOCELLULOSE**  
YOUR PERFECT SKIN







# AROSHA

AESTHETIC SCIENCE

## INSPIRATIONS FROM SCIENCE

The whole face project has been created following the principles of corneobiology. It is based on four main skin characteristics that are to be preserved: hydration, antioxidant activity, elasticity and permeability.



A word cloud centered around the brand name 'MATRIXTECH'. The words are arranged in various sizes and orientations, creating a dynamic visual. The central word 'MATRIXTECH' is the largest and most prominent. Other words include 'biocellulose', 'technology', 'PROVEN RESULTS', 'change', 'GROWTH', 'NETWORK', 'PREMIUM PROGRAM', 'CORNEOBIOLOGY', 'active charge', 'boost complex', 'INNOVATION', 'OSMOTIC EXCHANGE', 'cross selling', 'AROISHA', 'REVOLUTION', 'professionalism', 'scientific studies', 'educational program', and 'PROFESSIONALITY'.

OSMOTIC EXCHANGE

CORNEOBIOLOGY

active charge

boost complex

INNOVATION

technology

cross selling

AROISHA

REVOLUTION

professionalism

biocellulose

scientific studies

**MATRIXTECH**

educational program

PROVEN RESULTS

change

NETWORK

GROWTH

PREMIUM PROGRAM

# AROSHA FACE

## A SCIENTIFIC COMMITMENT FOR THE PERFECT SKIN

### AIM

- Launching "AROSHA FACE CONCEPT" by offering a full solution and more business possibilities to our professional customer giving a complementary and distinctive program.

### CONTINUITY & INNOVATION

- Reliable program with innovative and up to date solutions maintaining the AROSHA approach.
- Simple, ready to use, clean, practical protocol with results from the first session.
- Innovative first class ingredients combination.
- Use of biocellulose material as the main occlusive component due to its capacity to load and preserve in the best way active agents.
- Investing in scientific studies in order to prove real efficacy of our treatments.

### ECONOMIC KEY

- Premium program for a affordable price
- Optimization of the initial investment by using AROSHA solution.
- Reliable and easy to combine product, optimizing cash flow





CHEMICAL

psychosensory

COHESION - DESQUAMATION

ANTI-OXIDANT

mechanical/rheological

PERMEABILITY

CYTOKINE ACTIVATION

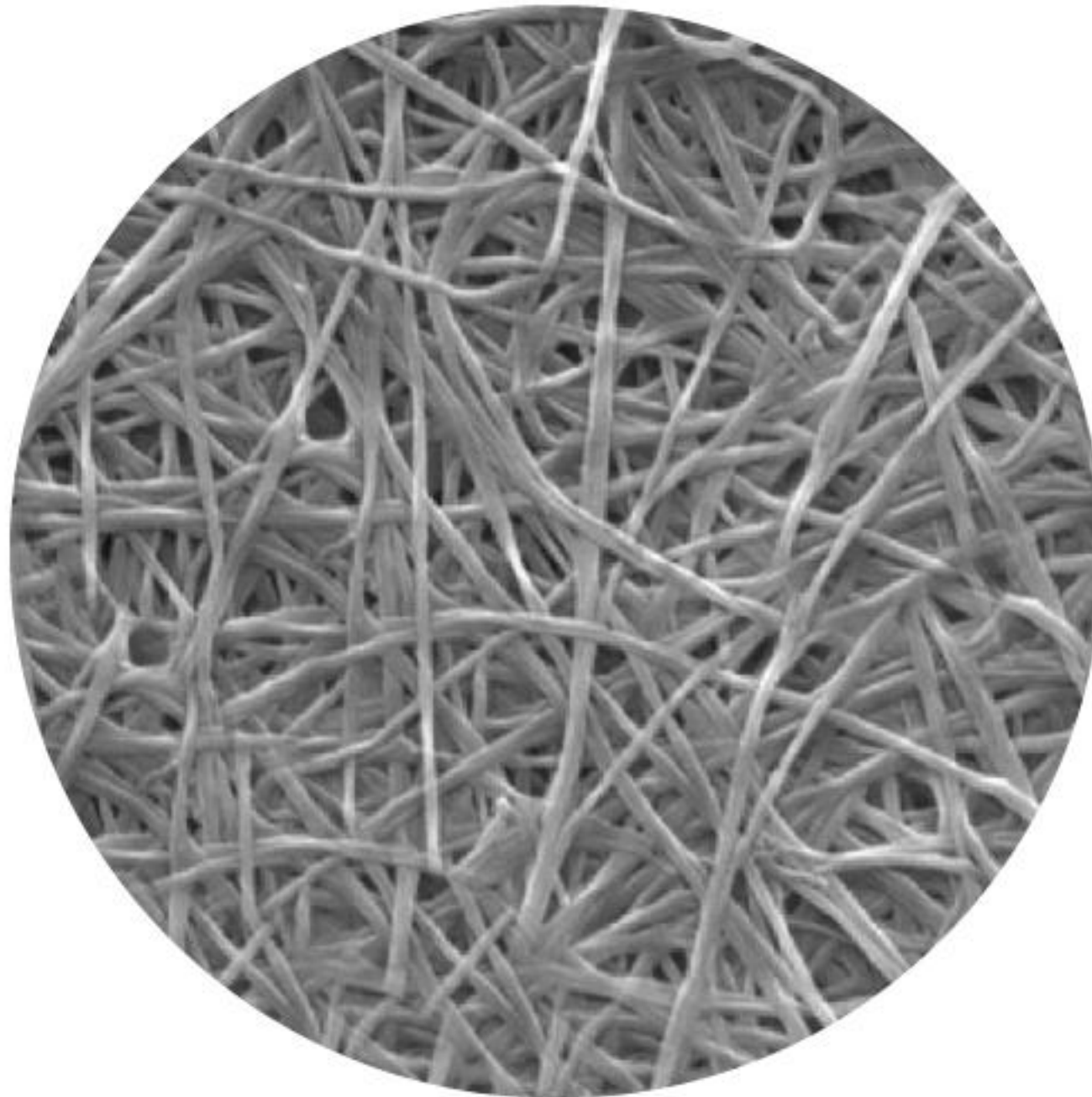
HYDRATION

anti-microbial

EXCLUSION OF ANTIGENS

protection against electromagnetic radiation





## ABOUT **BIOCELLULOSE**

Biocellulose is a polysaccharide widespread in nature that provides support and protection to vegetable fibers.

The material production (obtained by cultured bacteria) was developed initially for biomedical field where it has been used as material to heal and soothe burns and as occlusive dressing to treat chronic wounds.

It is also used in plastic/reconstructive surgeries. It is synthesized through the bacteria whose function is to convert sugar and other organic compounds into ribbons of pure cellulose that are intertwined into fabric sheet. Its tightly woven internal structure provides resistance and helps to conserve all the actives in the best state before they penetrate deep into the skin.



# AROSHA BIOCELLULOSE

Naturally synthesized from rice source by bacteria through a fermentation process converting sugar and other organic components into fibers of biocellulose.

## MAIN CHARACTERISTICS

Arosha biocellulose has several physical properties that set it apart as a premium material for use in skin care:

1. SUPPLY OF LONG-LASTING MOISTURE
2. SUPERIOR ADHESION MATERIAL THAT IMITATES NATURAL SKIN TEXTURE
3. HIGH TRANSFERRING EFFICIENCY
4. ENVIRONMENT-FRIENDLY  
(pure, natural & hypo-allergenic)
5. EXTREMELY FINE BUT INCREDIBLY RESILIENT







## IDEA

Provide a common technology (**MATRIXTECH**) to each treatment that is able to improve communication between skin layers, delivering specific actives for different needs.





# MATRIXTECH THE BIOCOMPLEX CONCEPT

The ultimate synergy of actives that helps to intensify the osmotic exchange through epidermal skin layers. Due to the improved skin permeability, MATRIXTECH allows deeper and faster penetration of the actives and enhances its action. Finally all the collected impurities are removed mechanically by the biocellulose sheet.



## HOW IT WORKS

### 1. BOOST COMPLEX



**DETOX**  
Detoxifying and calming action, prepare the skin to absorb active principles.

### 2. ACTIVE CHARGE



**REGENERATION**  
Stimulation of cellular renewal.



**DELIVERY**  
Delivery of the active ingredients selected for the specific treatment.

### 3. BIOCELLULOSE MASK



**EXCHANGE**  
Thanks to its occlusive capacity it intensifies the exchange process.



**REMOVE**  
Removes impurities stored in its internal layer that is in direct contact with skin surface.





## CRYSTAL PEEL

### PEEL PROGRAMME

#### PROFESSIONAL

- CLEANSING & EXFOLIATING KIT

40 treatments

## OXYGENETIC

### DETOX PROGRAMME

#### PROFESSIONAL

- DETOX & REGENERATING KIT

4 treatments

#### RETAIL

- PURIFYING & REGENERATING CREAM  
50 ml
- PURIFYING & REGENERATING MASK  
3 x 20 ml

## CELLULAR LIFT

### LIFTING PROGRAMME

#### PROFESSIONAL

- LIFTING & CONTOURING KIT

4 treatments

#### RETAIL

- LIFTING & CONTOURING CREAM  
50 ml
- LIFTING & CONTOURING MASK  
3 x 20 ml

## AGE RESOLUTION

### ANTI-AGE PROGRAMME

#### PROFESSIONAL

- REPAIR & REJUVENATING KIT

4 treatments

#### RETAIL

- ADVANCED ANTI-AGE CREAM  
50 ml
- ADVANCED ANTI-AGE MASK  
3 x 20 ml

## ILLUMINA C

### SPOT OUT PROGRAMME

#### PROFESSIONAL

- SPOT OUT & WHITENING KIT

4 treatments

#### RETAIL

- SPOT CORRECTOR & WHITENING CREAM  
50 ml
- SPOT CORRECTOR & WHITENING MASK  
3 x 20 ml



## CRYSTAL PEEL

### SPECIFIC PEEL PROGRAMME

#### FOCUS ON

- » exfoliate
- » smooth
- » deep cleanse

\* Can be used either alone or in combination with AROSHA OXYGENETIC, CELLULAR LIFT, AGE RESOLUTION and ILLUMINA C professional kits for the best performance guaranteed.

## CLEANSING & EXFOLIATING KIT



### VITAMIN C

CLEANSING & EXFOLIATING  
10 x 2,5 ML

#### Ingredients:

**ASCORBIC ACID (Vitamin C):** form of vitamin C, potent antioxidant and anti-inflammatory agent able to improve skin texture and quality, limit the appearance of wrinkles and erase brown spots and uneven skin tone.

### DERMA PEEL

DEEP EXFOLIATION CREAM  
50 ML

#### Ingredients:

**ACETYL CYSTEINE:** efficient antioxidant with cleansing and exfoliation properties.

**UREA:** natural humectant with extremely hydrating and moisturizing properties. Encourage cell renewal.

**SWEET ALMOND OIL (Prunus Amygdalus Dulcis):** nourishing, soothing, and moisturizing agent able to delay ageing process.

### GLYCOLIC PEEL

PURE EXFOLIATION GEL  
30 ML

#### Ingredients:

**GLYCOLIC ACID:** vital structural protein designed for skin exfoliation, protection and deep moisture.

**FRUIT ACIDS (Alphahydroxy Acids – "AHA"):** a group of acids naturally occurring in fruits and herbs used in cosmetics for thousands of years to clear and smooth the complexion.



## OXYGENETIC

### SPECIFIC DETOX PROGRAMME

#### FOCUS ON

- » Detoxification
- » Oxygenation
- » Deep moisture

#### SKIN CONCERN

- » Lack of moisture and dehydrated skin
- » Fatigued, dull and stressed skin
- » Sebaceous skin and comedonic skin

Recommended for dehydrated, dull, stressed and oily skin in order to protect from external agents by improving skin's health and luminosity.



At the beauty institute



At home

#### BC MASK DETOX & REGENERATING

100% PURE BIOCELLULOSE FIBER MASK + SODIUM HYALURONATE, BROWN ALGAE ELASTIN AND RHAMNOSOF

#### TRANSFER BOOST INSTANT CARRIER COMPLEX

ARTICHOKE, GINKGO BILOBA, CENTELLA ASIATICA, EQUISETUM, CAMELLIA (Green Tea)

#### ACTIVE CHARGE DETOX & REGENERATING

SODIUM HYALURONATE, BROWN ALGAE ELASTIN AND RHAMNOSOF

#### PURIFYING & REGENERATING CREAM 50 ML

BROWN ALGAE ELASTIN, VITAMIN MIX, SODIUM HYALURONATE, MAGNESIUM & ZINC

#### PURIFYING & REGENERATING MASK 3 x 20 ML

100% PURE BIOCELLULOSE FIBER MASK + COMPLEX E, SODIUM HYALURONATE CROSS-LINKED, PORTULACA OLERACEA, CHLORELLA VULGARIS ALGAE



## CELLULAR LIFT

### SPECIFIC LIFTING PROGRAMME

#### FOCUS ON

- » Lifting up
- » Firm & tighten
- » Tonify, elasticize

#### SKIN CONCERN

- » Slowing down of cell renewal
- » Premature aging
- » Deeper lines, wrinkles and sagging facial contours

A powerful combination of antioxidant and lifting actives to help firm up skin suffering from premature ageing, sagging facial contours and lack of elasticity.



At the beauty institute



At home

#### BC MASK LIFTING & CONTOURING

100% PURE BIOCELLULOSE  
FIBER MASK + DMAE AND RED  
ALGAE

#### TRANSFER BOOST INSTANT CARRIER COMPLEX

ARTICHOKE, GINKGO BILOBA,  
CENTELLA ASIATICA, EQUISETUM,  
CAMELLIA (Green Tea)

#### ACTIVE CHARGE LIFTING & CONTOURING

DMAE AND RED ALGAE

#### LIFTING & CONTOURING CREAM 50 ML

MALLUS DOMESTICA (Vegetal  
Stem Cells), PHYTOSAN (Soy  
Isoflavones) ARGIRELINE -  
"TOPICAL BOTOX" (Acetyl  
Hexapeptide B)

#### LIFTING & CONTOURING MASK 3 x 20 ML

100% PURE BIOCELLULOSE  
FIBER MASK + COMPLEX E,  
QUINOA AND REJULINE



## AGE RESOLUTION

### SPECIFIC ANTI-AGE PROGRAMME

#### FOCUS ON

- » Rejuvenation
- » Restructure and repair
- » Slow-down ageing

#### SKIN CONCERN

- » Prominent and mimic wrinkles
- » Slowing down of cell renewal
- » Premature aging and loss of skin firmness

Reverses ageing process, renews skin resilience and firmness, boosts production of collagen and elastin.



At the beauty institute



At home

#### BC MASK REPAIR & REJUVENATING

100% PURE BIOCELLULOSE  
FIBER MASK + PHYTOSAN AND  
VITAMIN A

#### TRANSFER BOOST INSTANT CARRIER COMPLEX

ARTICHOKE, GINKGO BILOBA,  
CENTELLA ASIATICA, EQUISETUM,  
CAMELLIA (Green Tea)

#### ACTIVE CHARGE REPAIR & REJUVENATING

PHYTOSAN AND VITAMIN A

#### ADVANCED ANTI-AGE CREAM 50 ML

CROCUS CHRISANTHUS  
(E.F.G. - Epidermal Growth  
Factor), PHYTOSAN (Soy  
Isoflavones)

#### ADVANCED ANTI-AGE MASK 3 x 20 ML

100% PURE BIOCELLULOSE  
FIBER MASK + COMPLEX E,  
COFFEE EXTRACT, BAOBAB,  
IBISCUS AND EPIDERMAL  
GROWTH FACTOR



## ILLUMINA C

### SPECIFIC SPOT OUT PROGRAMME

To reduce overall skin hyperpigmentation and cutaneous spots.

#### FOCUS ON

- » Spot out
- » Whitening
- » Lightening

#### SKIN CONCERN

- » Hyperpigmentation
- » Sun-damaged skin
- » Age spots and uneven skin tone

A unique spot out & whitening program for all skin types, supported by premium biocellulose; focused to reduce overall skin hyperpigmentation and cutaneous spots.



At the beauty institute



At home

#### BC MASK SPOT OUT & WHITENING

100% PURE BIOCELLULOSE  
FIBER MASK + VITAMIN C AND  
CITRIC ACID

#### REGENERIST SPOT OUT & WHITENING

MORINGA BUTTER,  
RHAMNOSOFT (Biosacharide  
Gum 2, ALANTOIN, ALMOND OIL,  
CALENDULA EXTRACT,  
CHAMOMILE, ALOE  
BARBADENSIS

#### ACTIVE CHARGE SPOT OUT & WHITENING

HEXYLRESORCINOL AND  
KOJIC ACID

#### SPOT CORRECTOR & WHITENING CREAM 50 ML

KOJIC & PHYTIC ACID,  
GLYCOLIC ACID AND ARBUTIN

#### SPOT CORRECTOR & WHITENING MASK 3 x 20 ML

100% PURE BIOCELLULOSE  
FIBER MASK + COMPLEX E,  
ASCORBYL GLUCOSIDE AND  
ACETYL GLYCYL L-ALANINE



# AROSHA

AESTHETIC SCIENCE

[www.arosha.it](http://www.arosha.it)

Solely Distributed by: \_\_\_\_\_

**DUBAI**  
**Medica Trading LLC**

Tel: + 971 4 4370 669  
Fax: + 971 4 4370 668  
[info@medicagroup.com](mailto:info@medicagroup.com)

**ABU DHABI**  
**Medica Trading LLC**

Tel: + 971 2 6581 619  
Fax: + 971 2 6581 612  
[info@medicagroup.com](mailto:info@medicagroup.com)

**KSA**  
**Medica - RIC**

Tel: + 966 11 4654 113  
Fax: + 966 11 4630 135  
[info@medicagroup.com](mailto:info@medicagroup.com)

**LEBANON**  
**Medica Pharmaceuticals s.a.l.**

Tel: + 961 4 710 973  
Fax: + 961 4 710 977  
[info-me@medicagroup.com](mailto:info-me@medicagroup.com)

**SINGAPORE**  
**Medica Singapore Pte Ltd**

Tel: + 65 67 33 96 89  
Fax: + 65 67 33 96 91  
[info-sg@medicagroup.com](mailto:info-sg@medicagroup.com)