

FINALLY A SOLUTION FOR THOSE UNWANTED HAIR



Before



Post 2 treatments



Before



Post 2 treatments

Device can perform vascular and pigmented lesions treatments as an option.

Now with excel HR™ laser hair removal, you really can get out of the shower, throw on your outfit, and rush out the door, without looking back!

HAIR-FREE SKIN

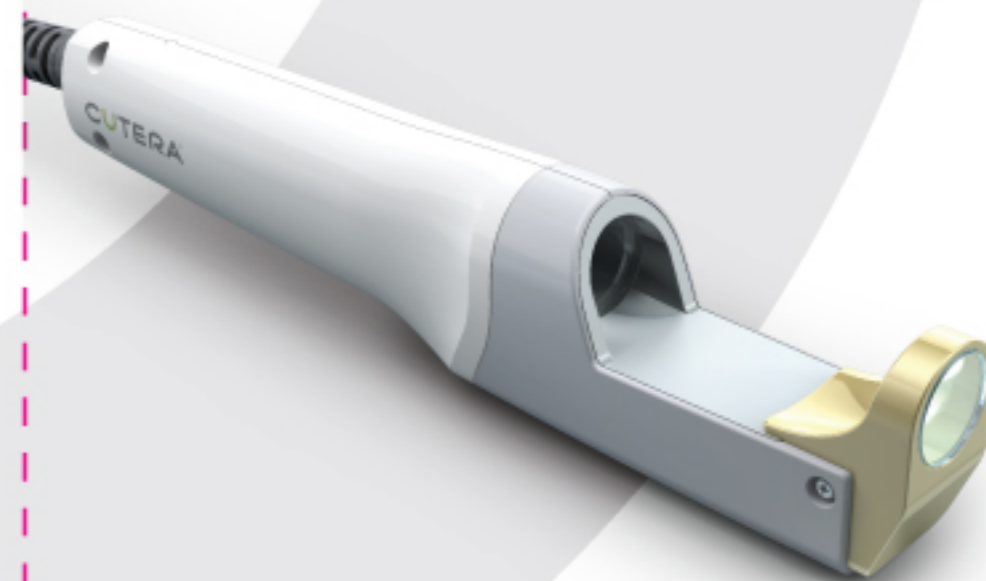
Raise your hands for irresistibly smooth, hair free skin, that's born to touch!

Speak to your excel HR® provider today!



excel HR™

21st Century Hair Removal



© Medica Creative



www.medicagroup.com

MedicaGroupME | @GroupMedica | #medicagroup

CUTERA®
FACE + BODY AESTHETIC SOLUTIONS



Developed by the pioneers of laser hair removal technology in 2000, excel HR™ is the next generation premium laser hair removal technology for women and men of all skin types, even tanned skin patients, available all-year-round.

What makes excel HR laser hair removal different from other laser hair removal technologies?

More coverage than ever before

excel HR's signature truPulse™ technology delivers consistent and sustained energy in each and every pulse—efficiently reducing the number of treatments required.

Superior patient comfort

excel HR significantly improves patient comfort by offering continuous cooling before, during and after each laser pulse. In a patient preference study measuring comfort and satisfaction, 100% of patients chose excel HR laser hair removal over a competitive laser hair removal procedure.

True laser technology

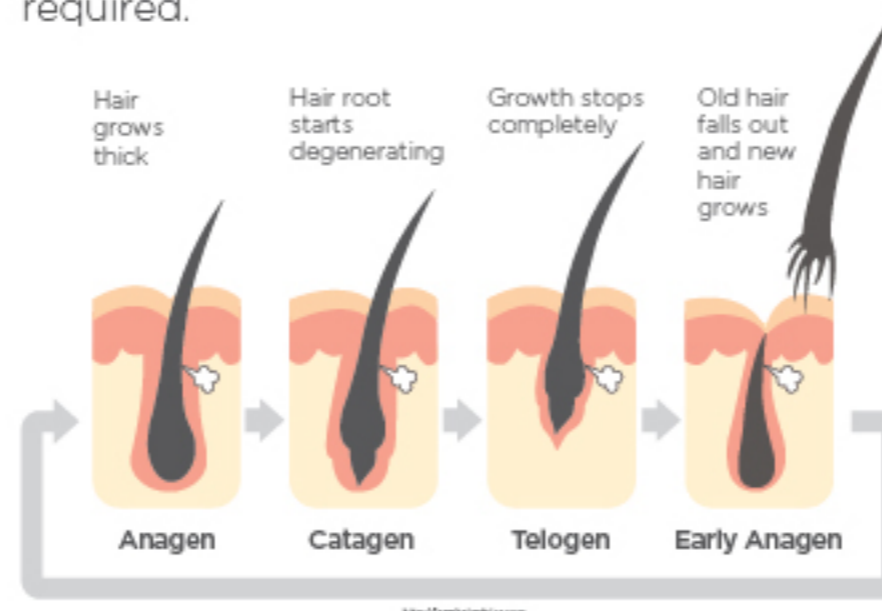
Unlike limitations of older technologies that use low-powered energy sources like pulsed light, excel HR only uses true, premium, laser sources to achieve the safest, most effective results for patients of all skin types.

How many treatments does excel HR laser hair removal require?

The total number of treatments varies based on the area treated. Typically, 4-5 treatments spaced 6-8 weeks apart is recommended.

Why does laser hair removal require multiple treatments?

Laser and other energy-based hair removal requires multiple treatments because hair grows in different phases. Hair can take 6-12 weeks for it to grow from root to surface—this growth stage is known as the anagen stage and this is the perfect time to receive laser hair removal. You know when you are due for your next treatment session when hair in the treated area begins to grow back. It is very important to stick with the treatment schedule that your practitioners suggests missing a treatment could allow your hair to enter the next stage where hair begins to detach from the hair follicle which can increase the number of treatments originally required.






What areas can be treated using excel HR?

Due to excel HR's superior technology, exceptional results are achievable on all hair types—fine or coarse. Commonly requested areas include underarms, legs, bikini area as well as men's chest and back.

Is excel HR™ laser hair removal really worth it?

While traditional methods of hair removal, like shaving, waxing and depilatory creams are still the go-to-methods for many, these methods are all temporary and must be repeated on a frequent basis...forever! excel HR laser hair removal is the quick and efficient solution to rid yourself of unwanted hair. Additionally, excel HR laser hair removal helps you to be much more efficient, economic and green.

The truth about shaving vs excel HR

 Efficient	 Economic	 Green
130.8 mins. are spent on shaving each month...forever	10,207\$ is spent on shaving supplies, in a lifetime	7,848 gallons of water are used for shaving in a year
VS	VS	VS
30 mins. are spent on excel HR every other month...for 8 months	2,000\$ is spent on a package of excel HR treatments	0 gallons of water are used for excel HR in a year